

Monthly Report (December 2011)

In December the total traded volume increased dynamically by 21,97% to 430 864,5 MWh compared to 353 266,5 MWh in November. The average daily traded volume was 13 898,9 MWh in December which was a 18,03% increase compared to the previous month. The highest daily traded volume was 15 700,3 MWh on 19th December delivery day. The number of admitted members reached 40 in the examined month.

List of the Members



Members

- Alpiq Energy SE
- CEZ, a.s.
- Danske Commodities A/S
- E.ON Energy Trading SE
- EDF DÉMÁSZ Zrt.
- Energy Financing Team (Switzerland) AG
- GDF SUEZ Energia Magyarország Zrt.
- GEN-I d.o.o.
- Holding Slovenske Elektrarne d.o.o.
- JAS Budapest Zrt.
- Magyar Áramszolgáltató Kft.
- Mátrai Erőmű Zrt.
- MVM Partner Zrt.
- Statkraft Markets GmbH
- DB Energy Commodities Ltd.
- Electrabel SA/NV
- Ezpada s.r.o.
- OMV Trading GmbH
- BC-Energiakereskedő Kft.
- Budapesti Erőmű Zrt.
- EDF Trading Limited
- EGL AG
- Gazprom Marketing & Trading Ltd
- Greenenergy-Trade Kft.
- SD Power Kft.
- MAVIR Zrt.
- Mercuria Energy Trading S.A
- ÓAM Ózdi Acélművek Kft.
- Repower Trading Ceska republika s.r.o
- RWE Supply &Trading GmbH
- S.C. Tinmar S.A
- VERBUND AG
- Vattenfall EnergyTrading GmbH
- Korlea Invest, a.s.
- Citigroup Global Markets Limited
- TRANSENERGO COM S.A.
- HEP Magyarország Energia Kft
- Edison Trading S.p.A. Magyarországi Fióktelepe
- MVM Trade Villamosenergia Kereskedelmi Zrt.
- GDF Suez Trading SAS

HUPX Day-Ahead Market

Description	11/2011	12/2011	Change	
HUPX Base Average Price (EUR/MWh)*	66,38	57,29	-9,09	-13,69%
HUPX Peak Average Price (EUR/MWh)*	80,21	71,94	-8,27	-10,31%
HUPX Base Trimmed Mean Price (EUR/MWh)**	66,52	57,93	-8,59	-12,91%
HUPX Peak Trimmed Mean Price (EUR/MWh)**	80,30	71,58	-8,72	-10,86%
OTC Base Trimmed Mean Price (EUR/MWh)**	68,79	58,86	-9,93	-14,44%
OTC Peak Trimmed Mean Price (EUR/MWh)**	87,95	75,83	-12,12	-13,78%
Diff. BL. HUPX↔OTC	2,75	2,52	-0,23	-8,36%
Diff. PL. HUPX↔OTC	4,39	4,27	-0,12	-2,73%

Highest Traded Price (EUR/MWh)	131,24	125,11	-6,13	-4,67%
Lowest Traded Price (EUR/MWh)	7,75	0,01	-7,74	-99,87%

Total Turnover (EUR)	22 960 220,14	24 515 453,22	1 555 233,08	6,77%
Average Daily Turnover (EUR)	765 340,67	790 821,07	25 480,40	3,33%
Max. Daily Turnover (EUR)	1 103 969,52	1 065 198,78	-38 770,74	-3,51%
Min. Daily Turnover (EUR)	499 482,94	335 844,81	-163 638,13	-32,76%

Description	11/2011	12/2011	Change	
Total Volume (MWh)	353 266,5	430 864,5	77 598,0	21,97%
Average Daily Traded Volume (MWh)	11 775,6	13 898,9	2 123,3	18,03%
Highest Daily Traded Volume (MWh)	14 465,0	15 700,3	1 235,3	8,54%
Lowest Daily Traded Volume (MWh)	9 484,5	11 455,6	1 971,1	20,78%
Highest Hourly Traded Volume (MWh)	781,4	895,6	114,2	14,61%
Lowest Hourly Traded Volume (MWh)	265,6	298,7	33,1	12,46%
Average Hourly Traded Volume (MWh)	490,6	579,1	88,5	18,03%

DAM - Weekdays	01-24 (Baseload)	01-24 (Baseload)		
Average Daily Traded Volume (MWh)	11 817,4	14 232,4	2 415,06	20,44%
DAM - Weekend	01-24 (Baseload)	01-24 (Baseload)		
Average Daily Traded Volume (MWh)	11 660,6	13 292,4	1 631,81	13,99%

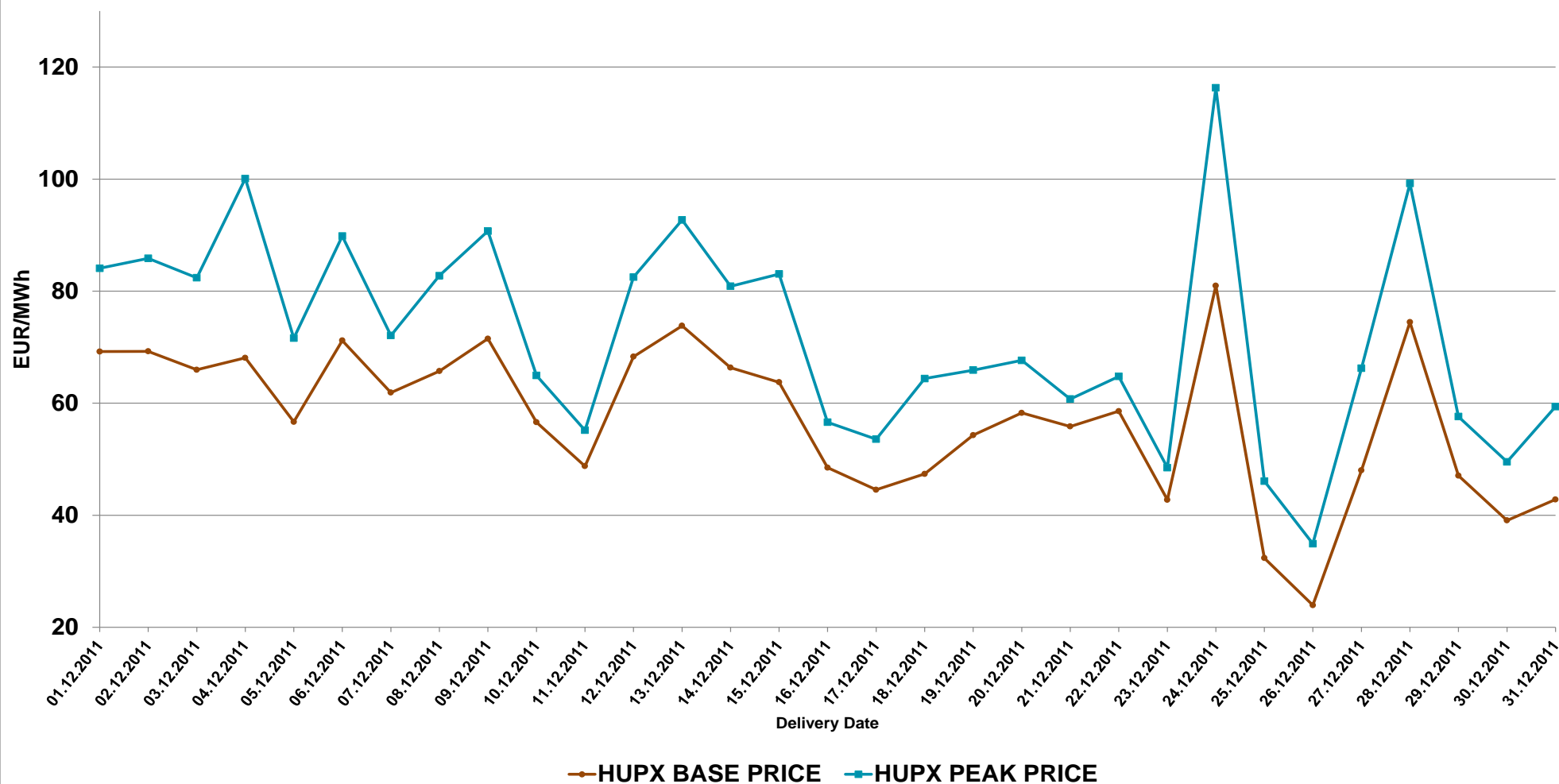
DAM - Weekdays	09-20 (Peakload)	09-20 (Peakload)		
Average Daily Traded Volume (MWh)	5 176,7	7 120,2	1 943,49	37,54%
DAM - Weekend	09-20 (Peakload)	09-20 (Peakload)		
Average Daily Traded Volume (MWh)	5 645,0	6 464,9	819,90	14,52%

Note:

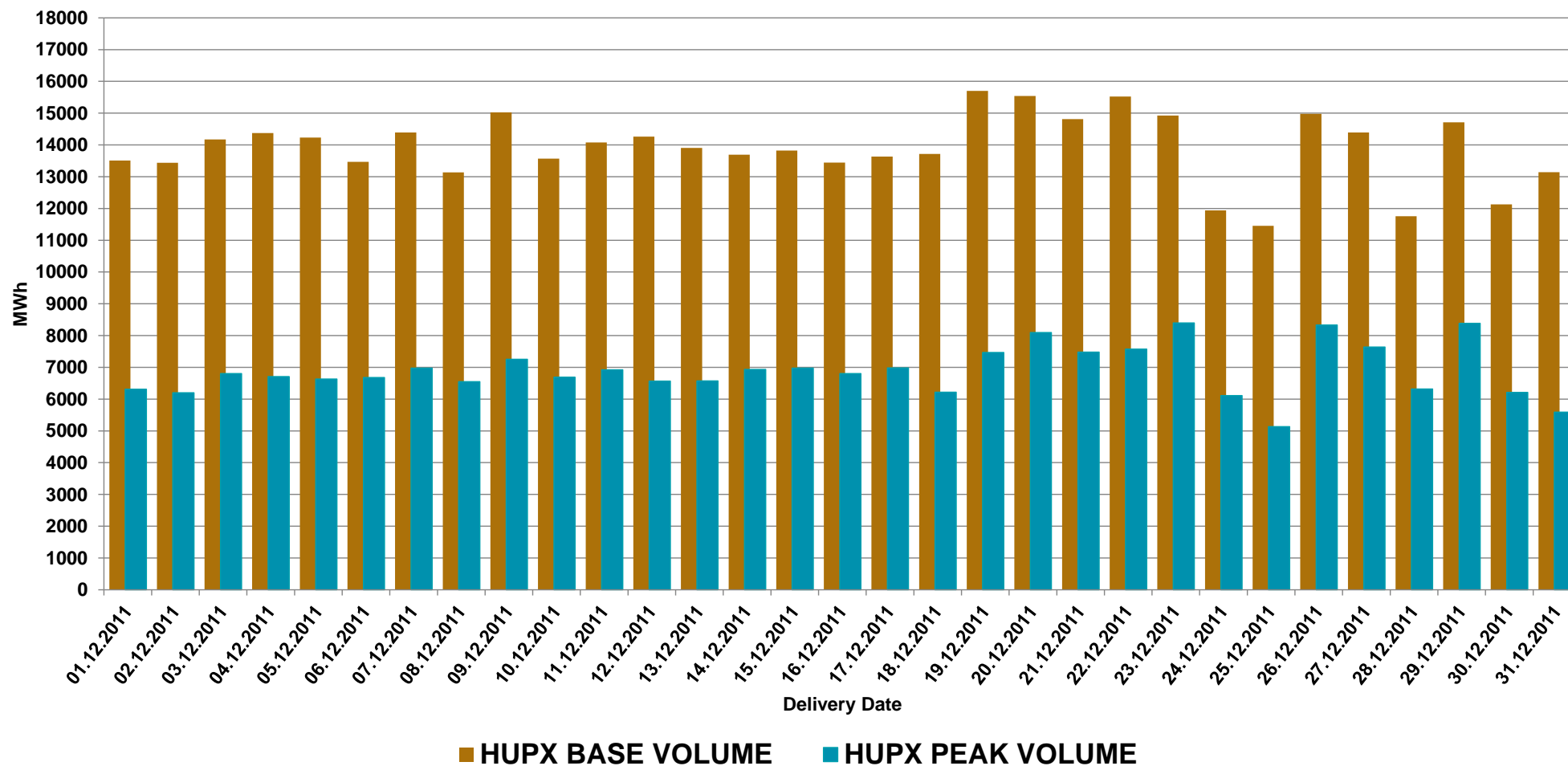
**The average price* contains all the hourly prices in the examined periods.

***Trimmed Mean* is a special average which shows monthly mean prices considering all prices except for the two lowest and the two highest. We applied this indicator to avoid from distortion of the results. Mean is very sensitive to extreme values.

HUPX Prices



HUPX Volumes

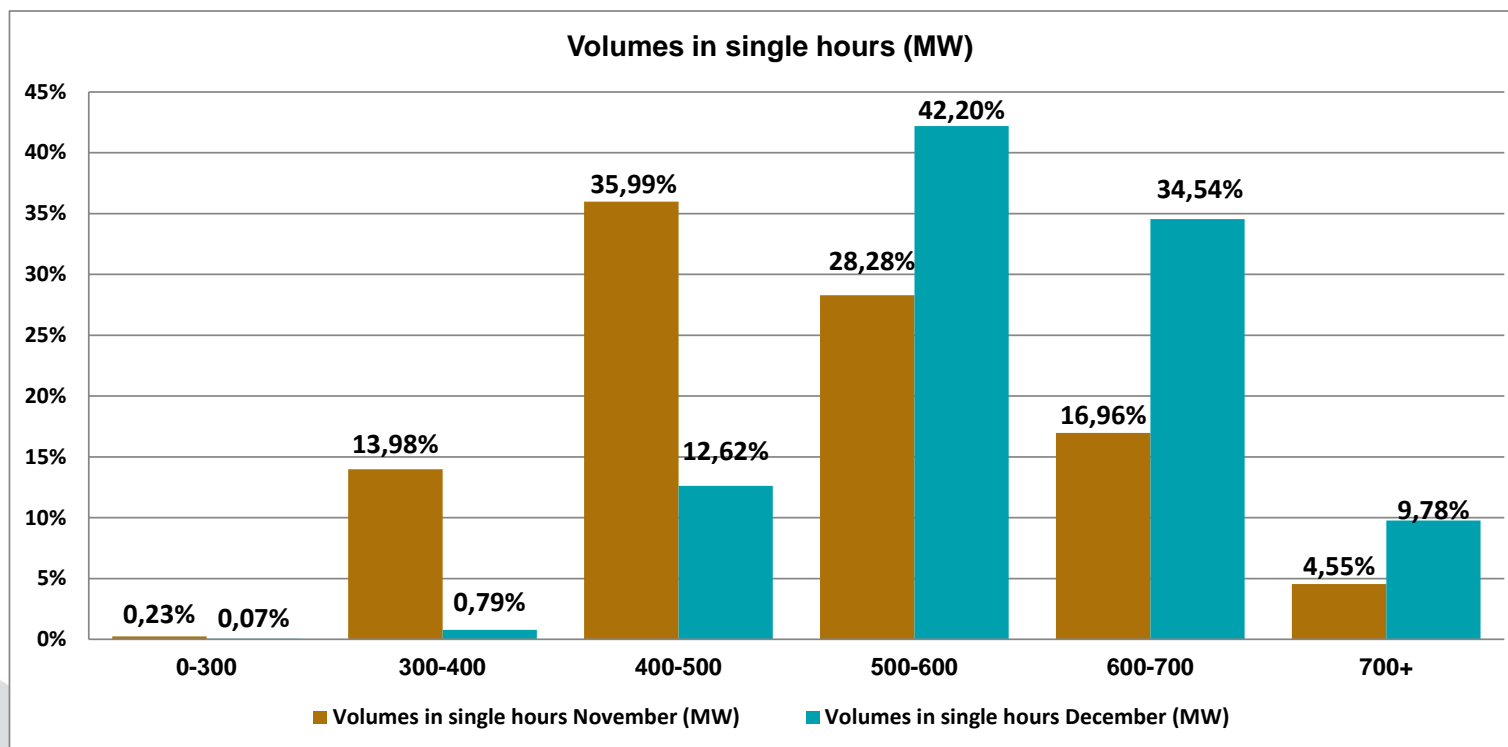


HUPX Day-Ahead Market
 Historical Data
 MWh / Delivery day / hour

Delivery hour	12/01	12/02	12/03	12/04	12/05	12/06	12/07	12/08	12/09	12/10	12/11	12/12	12/13	12/14	12/15	12/16	12/17	12/18	12/19	12/20	12/21	12/22	12/23	12/24	12/25	12/26	12/27	12/28	12/29	12/30	12/31	TOTAL
00-01	553	678.4	643.2	688.7	676.8	633.9	585.8	632	694.2	573.4	540.8	695	557.2	546.2	487.1	545.5	455.6	586.5	754.4	585.7	551.3	715.8	526	449	577.1	573.1	639.6	501.4	478	531.6	782.2	17 656,3
01-02	496.8	613.8	634.4	653.6	733.8	669.2	698.1	566.2	710.8	602.1	530.9	743.7	619.2	506.1	738.2	628.9	568.2	806.1	718.5	623.2	553.5	590	664.9	503.7	594.8	658.3	628.3	552.4	504.2	507.5	844.4	18 619,4
02-03	552.4	588.4	594.8	736.2	683.6	557.8	705.6	489.8	591.6	475.5	554	718.5	636.2	454.8	588.7	541.5	497	648.3	732	651.9	562.1	587.3	675.6	534.3	547.5	633.3	567.6	449.8	432.6	490.5	860.8	17 479,2
03-04	542.9	651.8	623.6	684.2	662.1	484.6	697.4	509.9	603.1	514.8	625.3	683.8	589.6	455.7	533.7	690.8	591.7	763.9	764	593.4	595.7	579.8	468.5	520.2	607.5	630.9	609.2	435.3	434.2	564.5	690.7	17 712,1
04-05	490.8	627.5	602	684.2	638.8	495.2	623.3	500.5	582.4	562.4	628.4	487.1	597.3	559.9	507.9	520.2	433	758.6	618.5	638.8	561.4	614.5	498.7	511.8	610.2	602.5	566.4	397.1	451.7	506.3	708.4	16 877,4
05-06	641.7	604.7	588.7	637.6	682.3	598.5	621.5	473.4	673.5	541.3	573.3	594.4	652.5	577.4	527.5	568.2	529.1	648.4	603.9	610.6	604.3	692.1	517.4	539.8	497.3	533.5	487.9	367.6	466.9	577.3	665	17 232,6
06-07	640.7	553.8	704.3	745.6	579.1	531.9	613	624	745.3	693.4	856.5	795.4	628.4	621	583.3	509	690.7	651.7	895.6	686.3	718.9	722.2	535.1	602.2	586	572.2	691.8	555.8	629.2	628.3	529.1	19 590,7
07-08	621.7	516.5	643.8	580.9	446.6	530.7	540.7	538.1	641.1	660.1	720.1	656.3	555.9	605.9	568.6	505.9	607.8	582.6	742.9	600.5	612.5	583.4	487.3	401.6	504.1	601.3	557.4	298.7	511.3	475.2	470.1	16 899,5
08-09	474.6	458.6	660.4	615.5	632.6	538.5	586.7	568.8	604.2	699.2	755.4	571.4	565.2	586.3	579.4	517.7	662.7	526.1	651.1	679.3	598.3	612.9	768.1	389.2	540.6	813.3	699	565.5	766.7	524	469.2	18 211,3
09-10	524.5	480.8	606.2	607	611.8	545.4	606.4	560.9	653.3	613	594	587.4	556.4	574.2	622.4	520.5	592.5	470.4	579.7	677.8	639.8	637.3	788.6	412.3	439.6	792.3	687.5	545.3	714.5	472.7	488.7	17 714,5
10-11	547	463.1	524.4	588.4	579.8	539.8	586.9	543.4	644.2	537.5	546.3	567.1	544.3	581.1	554	580.1	579.6	490	588.6	643.6	572.8	620.4	783.6	500.5	391.3	697.7	707.7	499.9	679.4	469.2	446.7	17 151,7
11-12	536	458.5	529.4	548.1	548.4	518.4	551.3	542.1	621.4	552.3	535.1	548.9	543.9	533.3	523.8	561	581.9	513.8	574.9	640.4	589.7	605.8	771.4	529.4	340.1	681.6	699.1	487.2	665.1	497.8	520.5	16 830,1
12-13	551	505.8	523.1	535.6	528.1	530.2	517.2	495.2	594.3	538.1	524.3	534.8	462.9	540.8	522.3	528.1	559.8	488.7	587.6	648.6	566.2	618.1	738.5	545.3	412.4	659	650.1	456.3	653.2	543.2	492.8	16 558,8
13-14	579.4	521.7	500.7	642	504.1	543	519.9	516.9	581.1	560	572.1	595.1	487.5	542.8	501.4	557.5	513.6	477.2	636.3	628.4	596.4	637.2	732.4	491.3	486.5	726.1	610.4	494.3	680	473.6	447	16 908,9
14-15	575.2	534.2	520.1	592.8	542.9	532.2	489.8	502.1	580.4	518.4	587.5	568.9	462.7	547.8	519.8	508.8	459.1	493.1	619.8	664.9	572	639.7	654.1	444.7	447.3	685.5	646.6	500.5	690.7	488.9	483.6	16 590,5
15-16	534.7	569.3	541.8	508.2	511.1	572.8	542.7	529.5	605.4	474	533	511.9	536.4	567	600.3	490.8	461.7	438.9	629.8	643.8	581.9	573.9	638.1	533	421.6	677.3	605.5	500.1	689	476.1	448	16 499,6
16-17	521.4	545.2	634	506.4	519.3	656.4	667.7	536.9	562.3	576.8	643.4	495.5	595.7	628.4	617.3	697	656.8	547.4	724.2	763.7	733	656.8	550.4	653.2	408.6	613.3	567.4	549.5	725.4	560.6	406.6	18 114,0
17-18	479.7	578.3	604.8	494.8	529.1	584.2	652.5	554.2	563.1	536.8	533.7	493.3	551	528.7	633.7	640.2	653.2	543.9	627.5	783	718.1	670.4	623.8	648.6	397.5	634.5	571.2	550.7	740.8	555.7	416.4	17 677,0
18-19	489.6	540.3	588.2	522.7	576.3	558.9	650.8	604.5	626.5	534.2	555.1	554	639	645.3	647.4	615.2	650	597.6	617.6	677	653	649.6	663.4	535.8	408.8	660.1	572.9	570.3	707.8	565.1	463.9	17 877,0
19-20	499.9	542.9	570.3	546.1	545.7	557.6	603	595.8	616.5	548.6	544.2	538.4	628	660.5	655.1	585.4	611.5	628.7	629.2	647.2	660	652.7	686.4	427.1	438.3	693.8	622.2	600.3	674.2	584.7	505.5	17 794,3
20-21	586.6	532.2	603.2	527.9	505.7	532.4	527.1	557.9	626	547	537.4	533.5	600.5	668.6	589.2	425.6	629.4	622	538.6	535.7	587.6	634.6	512.7	408.8	463.8	409.7	484.7	518.9	544.1	491.5	466.3	16 282,9
21-22	591.5	482.8	647.8	576.3	630.8	494	507.1	498	575.5	551.2	466.4	509.6	547	630.9	523.3	545.4	519.6	477.1	608.7	664.1	651	699	512.9	431.4	393.3	446.3	487.2	454.5	599.5	413.6	577.3	16 135,8
22-23	807.5	709.6	536.9	460.7	700.7	634.6	706.6	653.4	641.4	571	509.8	698.8	693.2	536.3	609.9	583.2	546	436.5	655.2	608.2	689.6	759.4	548.6	486.5	460.6	425.2	543.7	500.3	696.6	364.1	533.9	17 774,1
23-24	672	677.9	544.1	687	662.6	624	591.4	540.7	689.9	583.9	609	579.8	656.4	595.5	590.6	578.2	580	521.1	601.7	644	641.3	770.7	578.4	437.4	480.8	559.1	487.8	406.1	576.6	365.1	426.6	17 533,1
TOTAL:	13 510,6	13 436,1	14 170,2	14 370,5	14 232,1	13 464,2	14 392,5	13 134,2	15 027,5	13 565,0	14 076,0	14 262,6	13 906,4	13 694,5	13 824,9	13 444,7	13 630,5	13 718,6	15 700,3	15 540,1	14 810,4	15 523,6	14 924,9	11 937,1	11 455,6	14 979,9	14 391,2	11 757,8	14 711,7	12 127,1	13 143,7	430 864,5

HUPX Day-Ahead Market
Historical Data
 €/MWh / Delivery day / hour

Delivery hour	12/01	12/02	12/03	12/04	12/05	12/06	12/07	12/08	12/09	12/10	12/11	12/12	12/13	12/14	12/15	12/16	12/17	12/18	12/19	12/20	12/21	12/22	12/23	12/24	12/25	12/26	12/27	12/28	12/29	12/30	12/31	AVG
00-01	52,002	47,501	46,005	34,94	33,501	39,756	41,323	37,01	32,316	49,97	49,974	36,183	42,2	37,507	38,503	39,845	37,924	29,073	34,501	43,846	40,862	45,484	39,24	39,297	21,9	16,002	23,244	40,575	32,715	21,174	27,895	37,479
01-02	45,504	42,571	42,047	24,007	28,884	36,499	38,329	33,502	28,51	41,994	44,115	32,89	37,251	32,005	31,651	34,176	32,564	21,689	32,157	38,78	36,793	41,097	35,201	31,747	4,504	2,402	13,05	34,004	23,296	16,006	22,156	31,241
02-03	42,507	41,009	39,851	26,386	26,034	32,506	36,09	30,93	27,003	36,187	35,82	30,009	33,01	30,002	29,323	31,181	29,001	18,008	27,813	38,254	35,266	39,266	30,988	25,41	1,024	0,286	8,376	31,112	17,979	15,068	18,64	28,190
03-04	40,005	34,477	36,638	18,864	25	29,274	34,735	28,094	23,003	32,654	31,403	30,005	29,193	27,175	28	29,889	25,318	15,739	27,01	35,939	32,791	36,201	27,82	21,143	0,853	0,01	4,208	26,345	15,71	13,48	16,508	25,366
04-05	41,19	35,003	34,041	20,006	27,024	30,006	34,809	30,148	22,2	33,164	30,006	33,436	31,047	28,308	30,004	31,044	25,2	16,003	30,621	34,176	33,995	36,483	28,325	20,613	0,501	0,01	5,046	27,415	17,181	13,596	17,685	26,020
05-06	45,045	44,043	36,974	20,158	39,043	37,305	41,002	35,803	31,376	37,009	30,934	39,454	50,001	65,003	36,662	39,564	27,27	16,856	34,859	36,472	38,527	40,048	34,686	24,003	1,029	0,214	13,043	33,201	26,354	20,349	18,7	32,543
06-07	74,97	56,304	34,857	17,007	50,567	73,103	73,008	54,009	73,104	40,072	27,807	72,008	71,002	70,005	45,85	45,735	32,727	15,231	49,972	46,502	53,252	60,001	40,002	30,562	0,104	0,01	13,713	37,007	30,827	29,831	23,52	43,972
07-08	72,888	66,059	39,367	25,001	59,106	74,104	74,103	73,11	74,106	84,973	32,504	88,104	77,501	74,408	74,408	55,896	36,756	21,051	71	73,01	91,376	72,005	45,984	39,518	1,093	0,142	27,047	47,51	40,734	39,372	30,163	55,075
08-09	74,976	70,89	70,991	43,002	61,246	70,998	69,971	70	90,002	49,609	36,501	66,759	90,012	80,001	90,999	55,846	43,006	32,514	63,541	58,024	50,903	57,505	48,727	92,507	12,024	3,007	44,922	56,794	39,347	43,32	41,022	57,931
09-10	78,497	72,005	71,112	85,005	60,046	72,117	70,101	70,001	91,379	70,108	43,79	66,753	90,02	70,999	91,502	55,003	48,381	39,21	62,626	58,043	53,397	66,508	49,46	118,113	23,003	21,708	51,876	92,179	44,452	47,47	46,383	64,495
10-11	85,003	72,005	73,007	125,003	59,919	73,852	74,975	70,005	92,007	71,104	50,293	69,002	91,006	70,995	80,007	55,876	51,838	44,234	62,51	59,111	55,213	67,307	49,33	118,115	30,004	29,379	50,259	101,008	45,316	47,041	48,742	67,491
11-12	79,386	76,572	73,31	125,112	58,948	75,001	69,973	70,007	92,006	71,103	55,45	70,998	91,377	65,207	80,007	55,862	52,508	48,823	61,274	58,003	54,647	66,502	48,441	118,117	33,05	34,105	50,965	103,01	45,916	46,816	51,595	67,750
12-13	76,575	78,454	75,006	121,118	58,25	82,001	57,715	84,977	92,01	71,103	54,009	80,058	85,003	73,006	80,008	53,388	52,357	50,915	60,858	57,008	53,942	58,008	47,556	118,117	31,048	34,743	51,529	107,111	46,043	45,686	47,297	67,920
13-14	66,888	75,836	71,112	120,003	53,77	75,999	56,007	75,003	70,009	65,335	48,01	72,004	85,004	65,208	65,207	50,707	47,51	41,672	59,413	56,008	53,399	54,392	45,715	118,113	25,484	25,699	49,403	101,006	42,109	43,572	42,53	62,653
14-15	66,888	76,571	70,991	120,008	53,007	75,999	60,003	75,999	70,009	49,001	45,973	75,002	85,006	70,991	65,436	46,614	43,688	38,046	56,002	54,396	52,483	53,208	43,372	118,112	25,006	21,094	47,837	101,001	41,292	42,411	40,047	61,515
15-16	74,972	85,004	71,114	115,11	62,723	120,007	75,991	75,001	100,001	47,508	47,421	90,005	103,006	90,009	80,008	47,184	43,823	39,291	60,004	74,979	52,52	66,502	43,371	118,114	25,255	25,004	46,751	107,11	43,29	42,693	40,509	69,126
16-17	121,116	121,113	102,01	87,602	120,003	121,001	80,005	121,102	121,101	71,103	72,004	120,005	110,006	100,005	103,002	73,002	62,216	90,004	90,006	107,008	90,006	91,37	51,203	120	72,003	36,881	108,112	107,117	100	72,005	109,795	94,737
17-18	118,722	121,11	120,008	87,195	120,001	120,006	77,992	121,101	110,002	71,106	72,002	118,429	100,006	90,006	95,504	69,803	72,115	116,001	74,728	92,585	80,004	72,006	53,255	120	72,01	51,557	108,112	107,115	96,492	57,179	109,796	92,872
18-19	92,005	95,677	95,001	85,001	84,259	101,007	82,207	90,003	90,004	71,1	72,003	90	91,004	94,033	85,001	60	65,525	116	74,35	70,005	66,609	66,502	52,508	118,117	90,003	55,442	92,51	107,114	73,474	55,247	84,972	82,724
19-20	74,005	85,009	95,004	86,985	67,144	90,007	90,003	70,01	70,01	71,101	64,625	70,996	100,002	80,002	56,002	60,019	116,002	65,448	66,51	65,867	57,539	49,041	118,112	114,106	80,455	92,5	100,007	73,527	51,003	50	79,068	
20-21	66	73,603	114,687	79,163	59,004	75,003	74,006	75,001	75,004	62,504	70,995	72,101	76,492	77,38	75,106	48,317	50,493	84,972	60,101	75,954	76,656	72,004	44,501	116,043	90,01	47,007	72,002	92,502	76,004	45,172	42,135	72,593
21-22	52,006	72,004	85,009	69,974	48,714	73,001	46,008	73,007	73,006	49,97	55,704	63,009	74,546	70,008	50,989	43,226	45,215	46,77	49,48	73,007	72,001	72,005	41,056	90,009	43,58	33,193	65,001	100,005	72,006	43,648	32,644	61,572
22-23	65,008	69,979	48,75	55,009	60,005	82,002	77,005	70,01	103,112	64,371	52,504	100,004	72,008	65,01	50,528	46,776	44,582	43,729	50,169	49,972	52,877	70,992	39,616	72,001	33,941	33,05	65,006	84,975	51,5	46,631	34,734	60,704
23-24	55,004	49,098	36,507	42,491	43,962	48,018	50,004	43,6	65,009	46,368	46,504	52,007	65,005	44,972	42,077	39,157	39,047	35,371	44,515	40,779	47,075	43,098	36,689	37,501	25,002	23,207	47,641	42,124	34,045	38,886	30,009	43,492
AVG	69,215	69,246	65,975	68,090	56,673	71,191	61,890	65,726	71,512	56,605	48,765	68,301	73,821	66,344	63,741	48,504	44,545	47,384	54,290	58,265	55,853	58,585	42,754	80,974	32,356	23,942	48,006	74,473	47,067	39,069	42,812	57,289

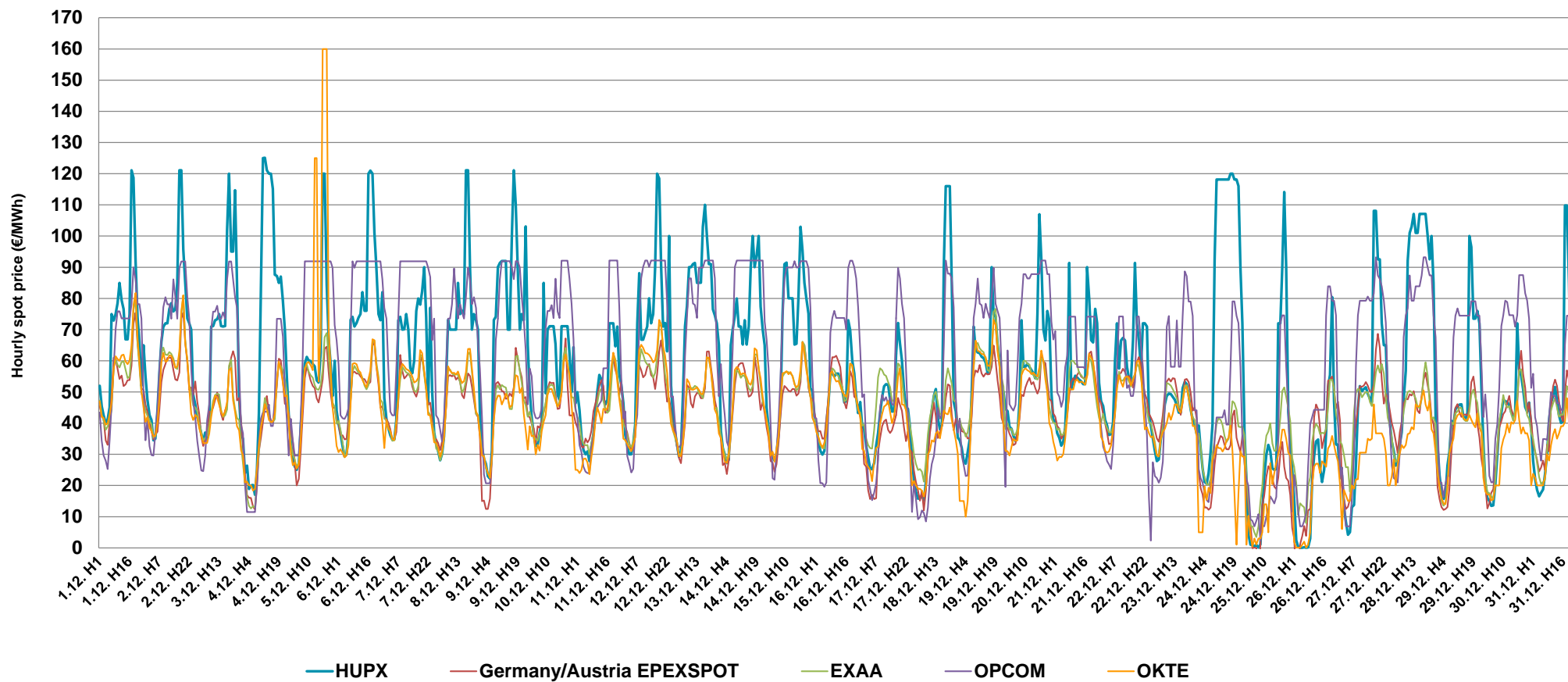


Note:

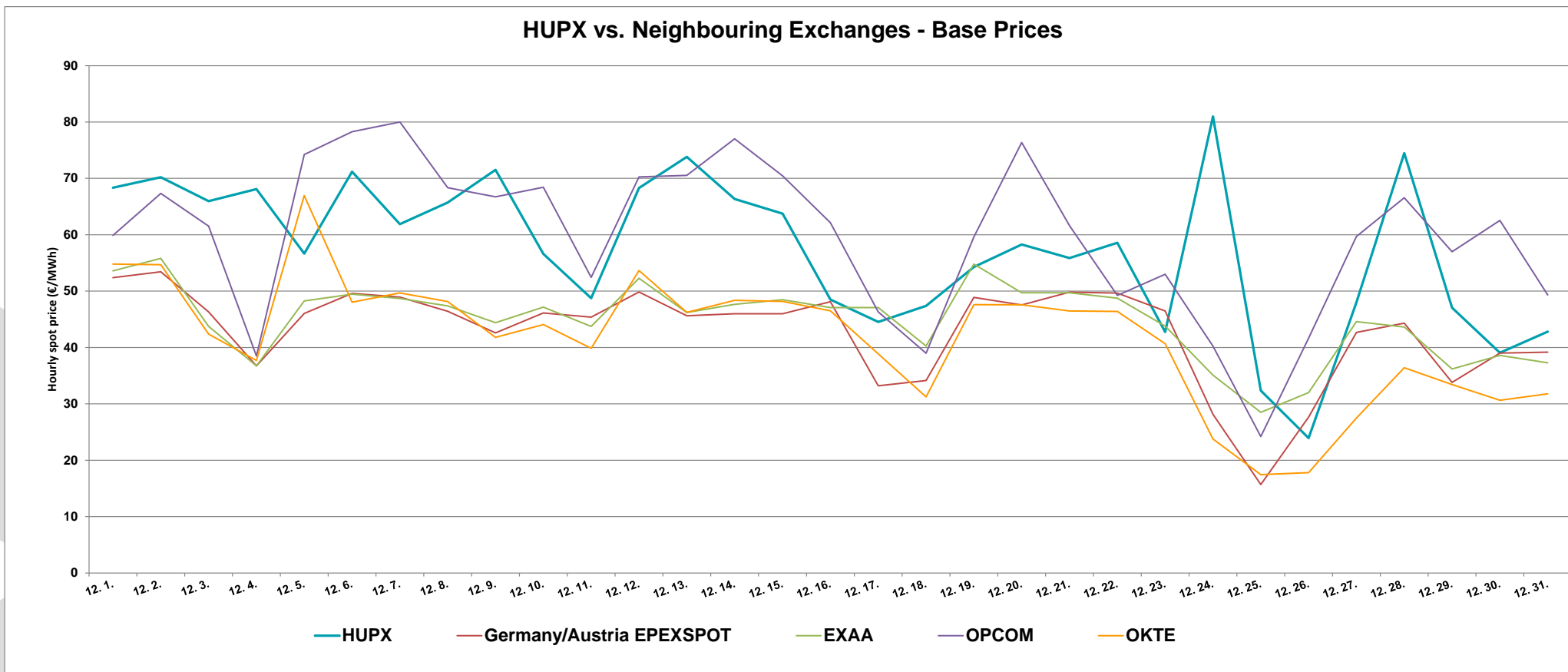
The bar chart shows the traded volumes in single hours in the examined period (01/12/2011-31/12/2011). We categorized the results according to the traded volume of each hour. Compared to the previous month, the distribution of executed volumes shows changes in the traded volumes: the ratio of the range 0-300 MW, 300-400, 400-500 MW decreased, while the ratio increased regarding the 500-600 MW, 600-700 and 700+.

HUPX prices vs. Neighbouring Exchanges – Hourly Prices

HUPX vs. Neighbouring Exchanges - Hourly Prices

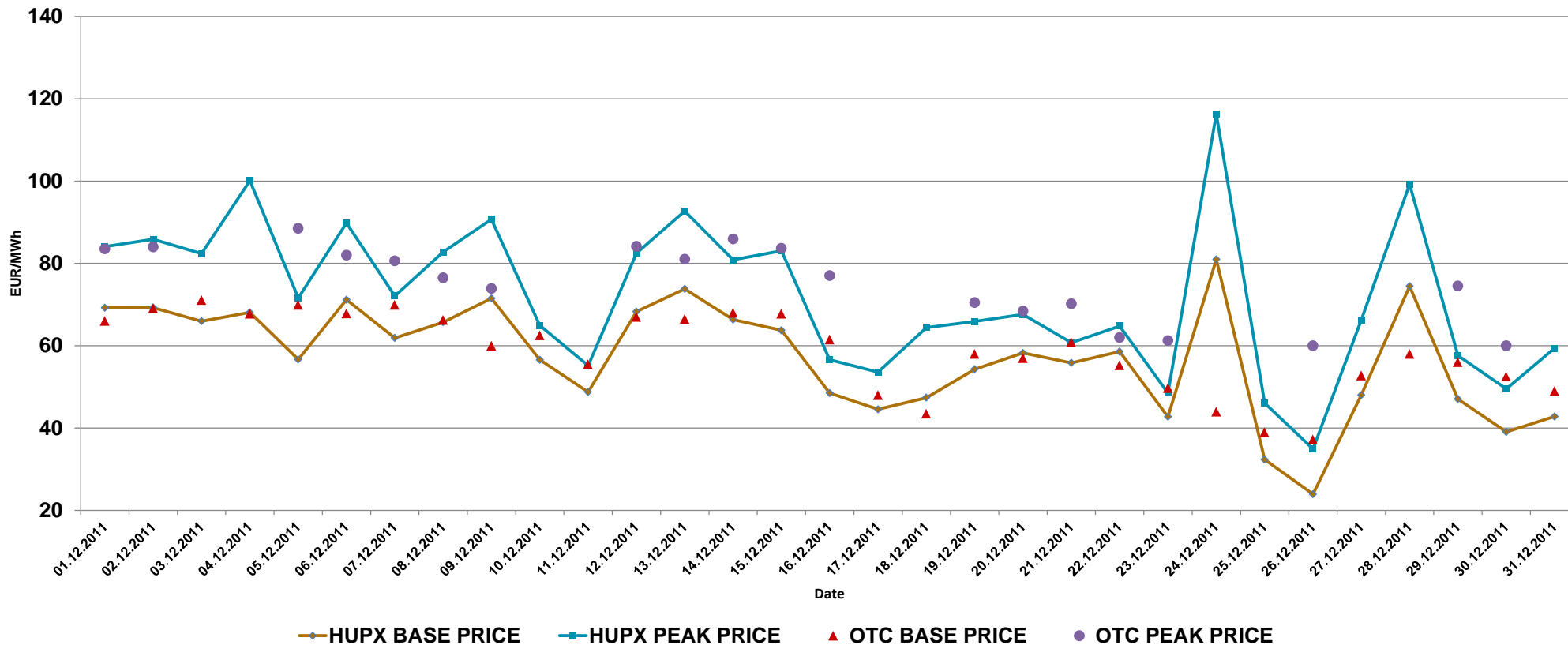


HUPX prices vs. Neighbouring Exchanges – Base Prices



HUPX vs. OTC

HUPX Prices vs. OTC Prices



*In order to see every curve adequately, the projecting points are not illustrated.

Diff. BL. HUPX↔OTC	2,52
Diff. PL. HUPX↔OTC	4,27

For information purposes only
HUPX Day-Ahead Market

Delivery date: 01/12/2011-31/12/2011
HUPX-PEL-2012-0009

Average of aggregated OFFERS/BIDS 01/12/2011-31/12/2011

Data shown in the table reflects the average hourly aggregated maximum sell and buy volumes, not considering price steps.

Hour	Offers	Bids	Index volumes
H1	1 458,3	1 867,6	594,8
H2	1 550,3	1 777,2	627,9
H3	1 620,8	1 652,2	591,6
H4	1 687,8	1 603,3	593,6
H5	1 635,9	1 622,5	567,3
H6	1 487,7	1 742,2	577,3
H7	1 443,7	1 842,6	649,0
H8	1 253,9	1 910,9	560,3
H9	1 052,0	1 978,3	602,6
H10	1 002,3	2 056,9	587,2
H11	1 002,6	2 116,1	567,7
H12	987,1	2 121,9	559,7
H13	965,2	2 118,9	550,1
H14	1 009,2	2 033,5	559,9
H15	1 010,9	2 027,2	550,8
H16	964,6	2 104,5	546,7
H17	896,1	2 338,1	597,4
H18	881,9	2 318,4	583,7
H19	902,5	2 273,8	591,6
H20	894,1	2 247,0	590,3
H21	985,2	2 175,1	540,3
H22	1 092,0	2 069,9	539,1
H23	1 301,3	2 119,4	590,6
H24	1 414,7	2 134,3	579,3
Σ	28 499,9	48 251,9	13 898,9

Base	
MIN (offer)	1 687,8
MAX (offer)	881,9
MIN (bid)	1 603,3
MAX (bid)	2 338,1
Average (offer)	1 187,5
Average (bid)	2 010,5
Peak	
MIN (offer)	1 052,0
MAX (offer)	881,9
MIN (bid)	1 978,3
MAX (bid)	2 338,1
Average (offer)	964,0
Average (bid)	2 144,5

Aggregated OFFERS/BIDS 01/12/2011-31/12/2011

Data shown in the table reflects hourly aggregated maximum sell and buy volumes, not considering price steps.

Hour	Offers	Bids	Index volumes
H1	45 206,1	57 894,9	18 438,5
H2	48 059,6	55 092,4	19 463,8
H3	50 244,5	51 219,0	18 340,0
H4	52 320,7	49 703,1	18 402,8
H5	50 712,6	50 297,2	17 585,8
H6	46 119,3	54 009,3	17 897,6
H7	44 754,9	57 121,6	20 119,8
H8	38 870,2	59 236,5	17 369,6
H9	32 611,5	61 327,8	18 680,5
H10	31 070,8	63 762,6	18 203,2
H11	31 079,1	65 600,6	17 598,4
H12	30 599,4	65 779,5	17 350,6
H13	29 920,6	65 686,6	17 051,6
H14	31 286,1	63 039,0	17 355,9
H15	31 338,2	62 842,0	17 074,1
H16	29 901,2	65 238,8	16 947,6
H17	27 779,7	72 480,5	18 520,6
H18	27 338,3	71 870,3	18 093,4
H19	27 978,5	70 487,7	18 340,9
H20	27 717,5	69 657,0	18 299,8
H21	30 539,9	67 428,9	16 749,2
H22	33 853,5	64 167,9	16 713,1
H23	40 339,4	65 700,8	18 308,0
H24	43 855,1	66 163,7	17 959,7
Σ	883 496,7	1 495 807,7	430 864,5

Base	
MIN (offer)	52 320,7
MAX (offer)	27 338,3
MIN (bid)	49 703,1
MAX (bid)	72 480,5
Average (offer)	36 812,4
Average (bid)	62 325,3
Peak	
MIN (offer)	32 611,5
MAX (offer)	27 338,3
MIN (bid)	61 327,8
MAX (bid)	72 480,5
Average (offer)	29 885,1
Average (bid)	66 481,0