

## Monthly Report July 2013

HUPX DAM reached 701 879,6 MWh in July. In the examined month the total traded volume increased by 7,36% compared to the 653 791,9 MWh achieved in June. The average daily traded volume was 22 641,3 MWh. The highest daily traded volume was 30 065 MWh on the delivery day of 21<sup>st</sup> July. The number of admitted members was 50 in the examined month.

### List of the Members



#### Members

- Alpiq Energy SE
- CEZ, a.s.
- Danske Commodities A/S
- E.ON Global Commodities SE
- Energy Financing Team (Switzerland) AG
- GDF SUEZ Energia Magyarország Zrt.
- GEN-I d.o.o.
- Holding Slovenske Elektrarne d.o.o.
- JAS Budapest Zrt.
- Magyar Áramszolgáltató Kft.
- Mátrai Erőmű Zrt.
- MVM Partner Zrt.
- Statkraft Markets GmbH
- BC-Energiakereskedő Kft.
- Budapesti Erőmű Zrt.
- Citigroup Global Markets Limited
- Compagnie Nationale du Rhone
- DB Energy Commodities Ltd.
- Dunafin Kft.
- EDF Trading Limited
- Edison Trading S.p.A. Magyarországi Fióktelepe
- EGL AG
- Enel Trade S.p.A.
- Ezpada s.r.o.
- Freepoint Commodities Europe LLP
- Gazprom Marketing & Trading Ltd
- GDF Suez Trading SAS
- Greenergy-Trade Kft.
- HAMBURGER Hungaria Kft.
- HEP Magyarország Energia Kft
- Interenergo d.o.o.
- ISD Power Kft.
- MAVIR Zrt.
- Mercuria Energy Trading S.A
- Monsson Energy Trading S.R.L.
- Morgan Stanley Capital Croup Energy Europe Limited
- ÓAM Ózdi Acélművek Kft.
- OMV Trading GmbH
- OPTENERGY Kft.
- PETROL d.d. Ljubljana
- RD CZ ENERGY s.r.o.
- Repower Trading Ceska republika s.r.o
- RWE Supply &Trading GmbH
- TEI-ENERGY S.p.A
- TINMAR-IND S.A.
- TRANSENERGO COM S.A.
- Vattenfall EnergyTrading GmbH
- VERBUND AG
- Vitol Gas & Power B.V.
- VPP Erőmű Üzemeltető és Kereskedelmi Zrt.

## HUPX Day-Ahead Market

Description	06/2013	07/2013	Change	
HUPX Base Average Price (EUR/MWh)	33,91	44,69	10,78	31,79%
HUPX Peak Average Price (EUR/MWh)	41,16	52,33	11,17	27,14%
Diff. BL. HUPX→OTC	1,41	2,82	1,42	100,68%
Diff. PL. HUPX→OTC	4,69	0,78	-3,91	-83,42%

Highest Traded Price (EUR/MWh)	135,03	150,05	15,02	11,12%
Lowest Traded Price (EUR/MWh)	-10,00	11,69	21,69	216,90%

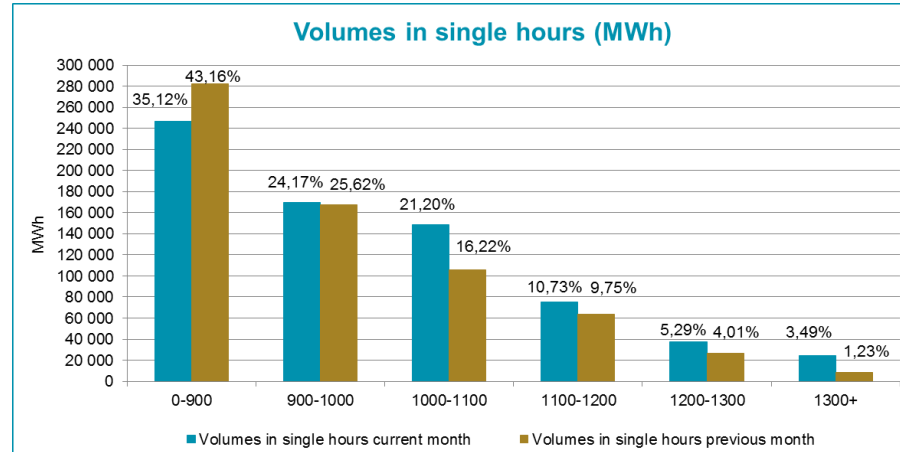
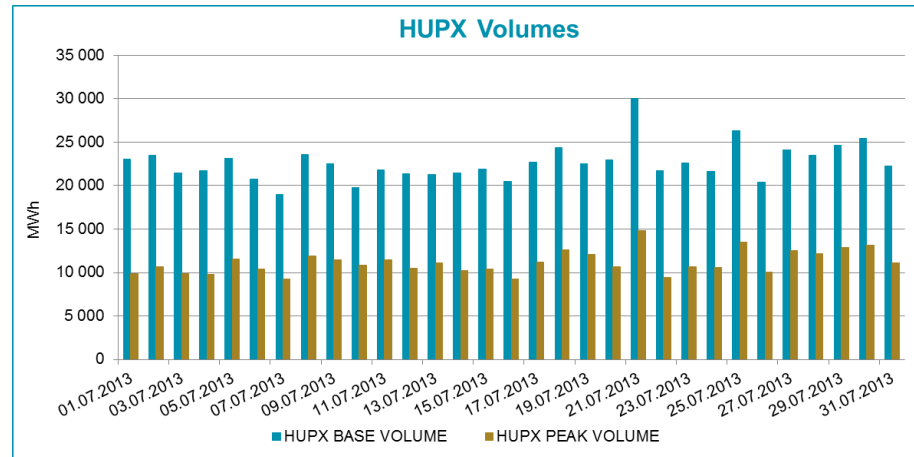
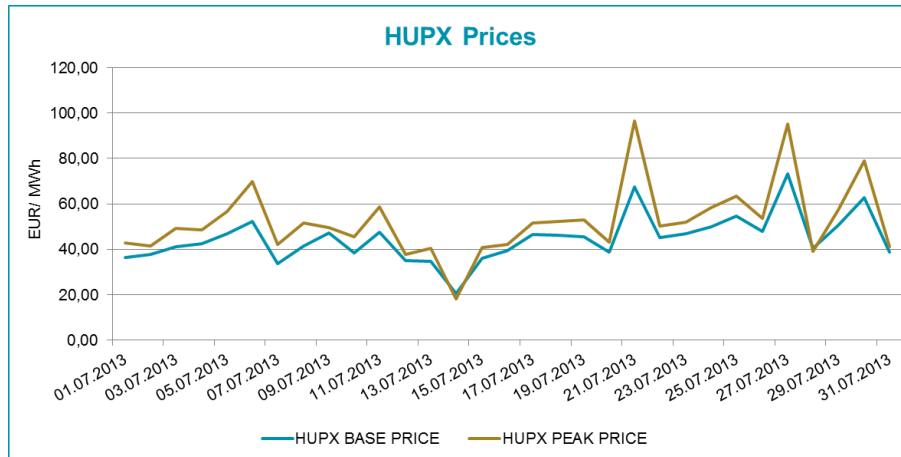
Total Turnover (EUR)	21 940 395	31 832 567	9 892 172	45,09%
Average Daily Turnover (EUR)	731 346	1 026 857	295 511	40,41%
Max. Daily Turnover (EUR)	1 542 968	1 991 896	448 927	29,10%
Min. Daily Turnover (EUR)	178 389	441 413	263 024	147,44%

Description	06/2013	07/2013	Change	
Total Volume (MWh)	653 791,9	701 879,6	48 087,7	7,36%
Average Daily Traded Volume (MWh)	21 793,1	22 641,3	848,2	3,89%
Highest Daily Traded Volume (MWh)	26 298,8	30 065,0	3 766,2	14,32%
Lowest Daily Traded Volume(MWh)	18 127,7	18 942,9	815,2	4,50%
Highest Hourly Traded Volume (MWh)	1 386,8	1 460,8	74,0	5,34%
Lowest Hourly Traded Volume(MWh)	541,6	588,0	46,4	8,57%
Average Hourly Traded Volume (MWh)	908,0	943,4	35,3	3,89%

DAM - Weekdays	01-24 (Baseload)	01-24 (Baseload)		
Average Daily Traded Volume (MWh)	21 502,8	22 559,6	1 056,8	4,91%
DAM - Weekend	01-24 (Baseload)	01-24 (Baseload)		
Average Daily Traded Volume (MWh)	22 373,7	22 876,2	502,5	2,25%

DAM - Weekdays	09-20 (Peakload)	09-20 (Peakload)		
Average Daily Traded Volume (MWh)	9 803,3	11 082,4	1 279,1	13,05%
DAM - Weekend	09-20 (Peakload)	09-20 (Peakload)		
Average Daily Traded Volume (MWh)	10 630,9	11 393,4	762,5	7,17%

HUPX Prices and volumes

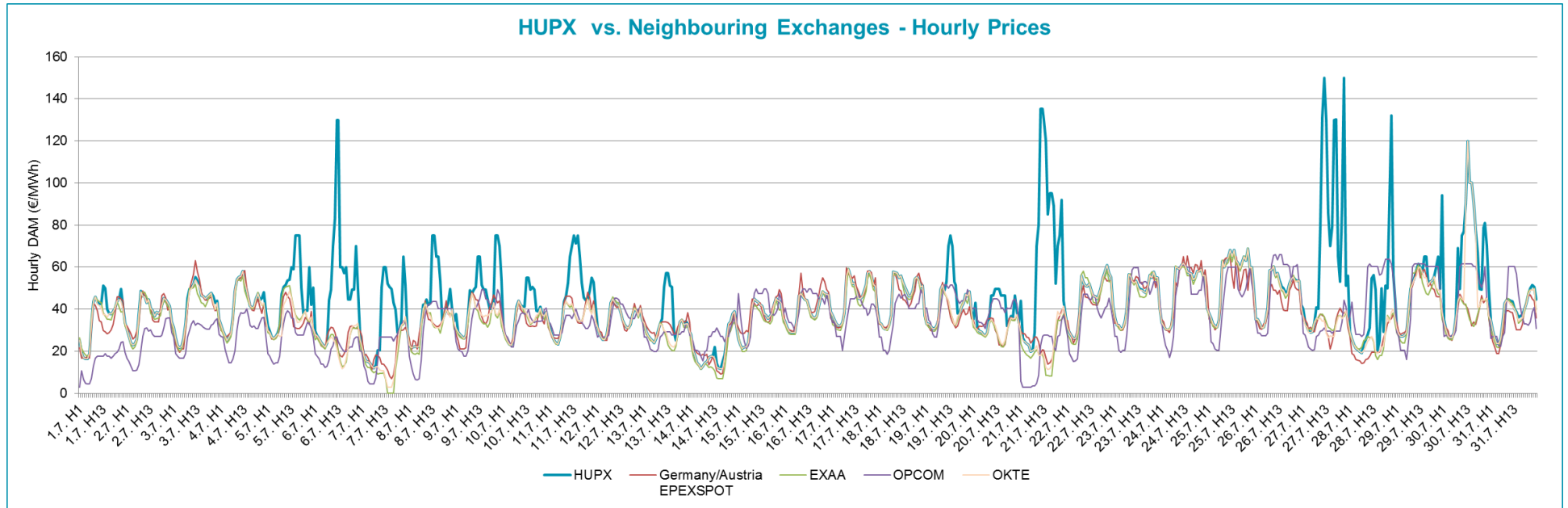


**Note:**

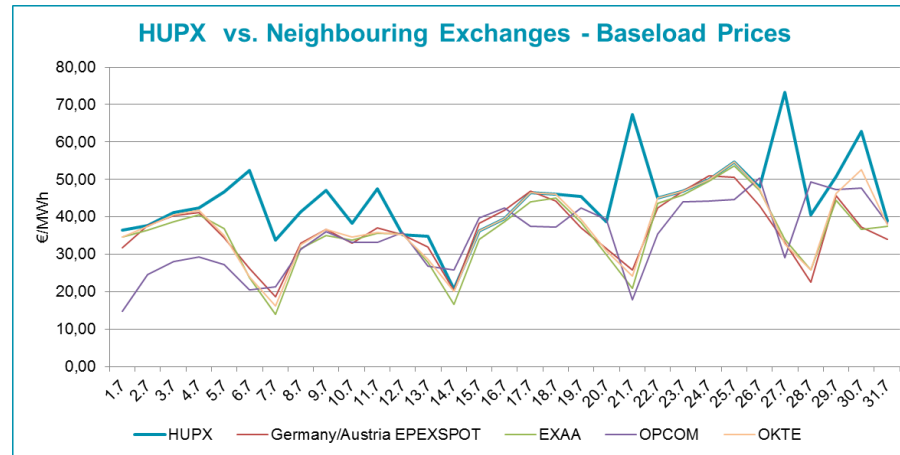
The bar chart shows the traded volumes in single hours in the examined period (01/07/2013-31/07/2013). We categorized the results according to the traded volume of each hour. Compared to the previous month, the distribution of executed volumes shows changes in the traded volumes: the ratio of the range 0 - 900 MWh, 900 – 1 000 MWh decreased, while the ratio increased regarding the 1 000 – 1 100 MWh, 1 100 – 1 200 MWh, 1 200 – 1 300 MWh and 1 300+ MWh.



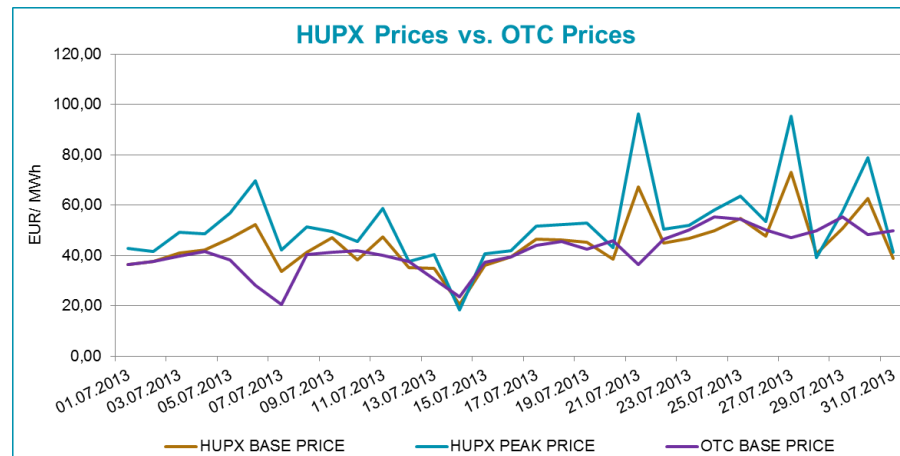
HUPX prices vs. Neighbouring Exchanges – Hourly Prices



HUPX prices vs. Neighbouring Exchanges – Base Prices



HUPX vs. OTC



Diff. BL.	HUPX↔OTC	2,82
Diff. PL.	HUPX↔OTC	0,78

Average of aggregated OFFERS/BIDS 01/07/2013-31/07/2013

Data shown in the table reflects the average hourly aggregated maximum sell and buy volumes, not considering price steps.

Hour	Offers	Bids	Index volumes
H1	1 262,1	1 462,9	910,4
H2	1 409,7	1 455,6	984,2
H3	1 559,4	1 405,9	1 044,4
H4	1 604,6	1 371,8	1 075,3
H5	1 603,2	1 327,0	1 040,4
H6	1 503,3	1 296,2	906,9
H7	1 304,6	1 381,6	796,0
H8	1 338,5	1 542,7	931,6
H9	1 328,2	1 398,8	837,8
H10	1 247,8	1 527,3	908,1
H11	1 142,3	1 633,5	951,3
H12	1 087,2	1 736,5	986,8
H13	1 054,2	1 817,0	1 022,4
H14	1 056,8	1 766,1	993,6
H15	1 075,8	1 716,4	972,8
H16	1 102,7	1 686,1	957,6
H17	1 191,2	1 621,1	923,7
H18	1 250,5	1 543,0	894,1
H19	1 216,3	1 429,8	855,3
H20	1 236,6	1 430,7	858,9
H21	1 176,0	1 637,5	906,6
H22	1 149,5	1 757,5	982,1
H23	1 213,7	1 605,6	969,9
H24	1 528,9	1 724,7	930,8
<b>Σ</b>	<b>30 642,9</b>	<b>37 275,2</b>	<b>22 641,3</b>

Base	
MIN (offer)	1 054,2
MAX (offer)	1 604,6
MIN (bid)	1 296,2
MAX (bid)	1 817,0
Average (offer)	1 276,8
Average (bid)	1 553,1

Peak	
MIN (offer)	1 054,2
MAX (offer)	1 328,2
MIN (bid)	1 398,8
MAX (bid)	1 817,0
Average (offer)	1 165,8
Average (bid)	1 608,9

Aggregated OFFERS/BIDS 01/07/2013-31/07/2013

Data shown in the table reflects hourly aggregated maximum sell and buy volumes, not considering price steps.

Hour	Offers	Bids	Index volumes
H1	39 124,1	45 350,0	28 223,8
H2	43 700,0	45 124,3	30 510,9
H3	48 340,0	43 582,7	32 377,5
H4	49 743,1	42 525,7	33 333,1
H5	49 698,4	41 137,8	32 252,3
H6	46 603,4	40 181,8	28 114,9
H7	40 443,4	42 828,9	24 677,3
H8	41 493,1	47 822,3	28 879,8
H9	41 174,4	43 363,8	25 973,3
H10	38 681,3	47 344,9	28 150,8
H11	35 410,7	50 637,5	29 491,8
H12	33 701,8	53 830,9	30 592,2
H13	32 679,7	56 328,3	31 694,8
H14	32 761,6	54 748,2	30 801,0
H15	33 350,6	53 209,6	30 158,2
H16	34 184,2	52 268,1	29 685,4
H17	36 927,2	50 253,4	28 633,3
H18	38 765,1	47 832,2	27 718,6
H19	37 704,7	44 322,7	26 514,9
H20	38 333,6	44 353,0	26 626,7
H21	36 454,5	50 762,7	28 103,3
H22	35 633,2	54 482,7	30 445,0
H23	37 625,5	49 773,0	30 066,4
H24	47 396,4	53 465,5	28 854,3
<b>Σ</b>	<b>949 930,0</b>	<b>1 155 530,0</b>	<b>701 879,6</b>

Base	
MIN (offer)	32 679,7
MAX (offer)	49 743,1
MIN (bid)	40 181,8
MAX (bid)	56 328,3
Average (offer)	39 580,4
Average (bid)	48 147,1

Peak	
MIN (offer)	32 679,7
MAX (offer)	41 174,4
MIN (bid)	43 363,8
MAX (bid)	56 328,3
Average (offer)	36 139,6
Average (bid)	49 874,4