

Monthly Report August 2013

HUPX DAM reached 768 885,9 MWh in August. In the examined month the total traded volume increased by 9,55% compared to the 701 879,6 MWh achieved in July. The average daily traded volume was 24 802,8 MWh. The highest daily traded volume was 28 632,6 MWh on the delivery day of 18th August. The number of admitted members was 50 in the examined month.

List of the Members



Members

- Alpiq Energy SE
- CEZ, a.s.
- Danske Commodities A/S
- E.ON Global Commodities SE
- Energy Financing Team (Switzerland) AG
- GDF SUEZ Energia Magyarország Zrt.
- GEN-I d.o.o.
- Holding Slovenske Elektrarne d.o.o.
- JAS Budapest Zrt.
- Magyar Áramszolgáltató Kft.
- Mátrai Erőmű Zrt.
- MVM Partner Zrt.
- Statkraft Markets GmbH
- BC-Energiakereskedő Kft.
- Budapesti Erőmű Zrt.
- Citigroup Global Markets Limited
- Compagnie Nationale du Rhone
- DB Energy Commodities Ltd.
- Dunafin Kft.
- EDF Trading Limited
- Edison Trading S.p.A. Magyarországi Fióktelepe
- EGL AG
- Enel Trade S.p.A.
- Ezpada s.r.o.
- Freepoint Commodities Europe LLP
- Gazprom Marketing & Trading Ltd
- GDF Suez Trading SAS
- Greenergy-Trade Kft.
- HAMBURGER Hungaria Kft.
- HEP Magyarország Energia Kft
- Interenergo d.o.o.
- ISD Power Kft.
- MAVIR Zrt.
- Mercuria Energy Trading S.A
- Monsson Energy Trading S.R.L.
- Morgan Stanley Capital Group Energy Europe Limited
- ÓAM Ózdi Acélművek Kft.
- OMV Trading GmbH
- OPTENERGY Kft.
- PETROL d.d. Ljubljana
- RD CZ ENERGY s.r.o.
- Repower Trading Ceska republika s.r.o
- RWE Supply & Trading GmbH
- TEI-ENERGY S.p.A
- TINMAR-IND S.A.
- TRANSENERGO COM S.A.
- Vattenfall EnergyTrading GmbH
- VERBUND AG
- Vitol Gas & Power B.V.
- VPP Erőmű Üzemeltető és Kereskedelmi Zrt.

HUPX Day-Ahead Market

Description	07/2013	08/2013	Change	
HUPX Base Average Price (EUR/MWh)	44,69	47,42	2,73	6,11%
HUPX Peak Average Price (EUR/MWh)	52,33	55,44	3,11	5,94%
Diff. BL. HUPX→OTC	2,82	1,53	-1,30	-45,92%
Diff. PL. HUPX→OTC	0,78	-0,49	-1,27	-162,83%

Highest Traded Price (EUR/MWh)	150,05	138,95	-11,10	-7,40%
Lowest Traded Price (EUR/MWh)	11,69	11,09	-0,60	-5,13%

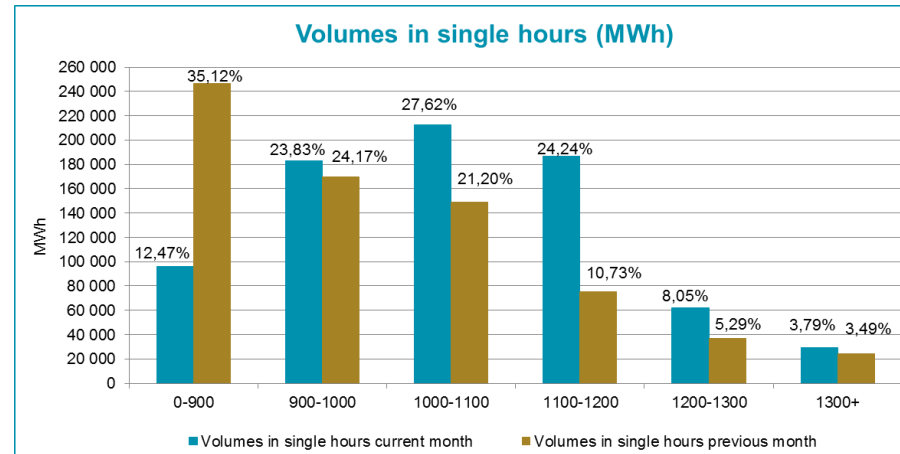
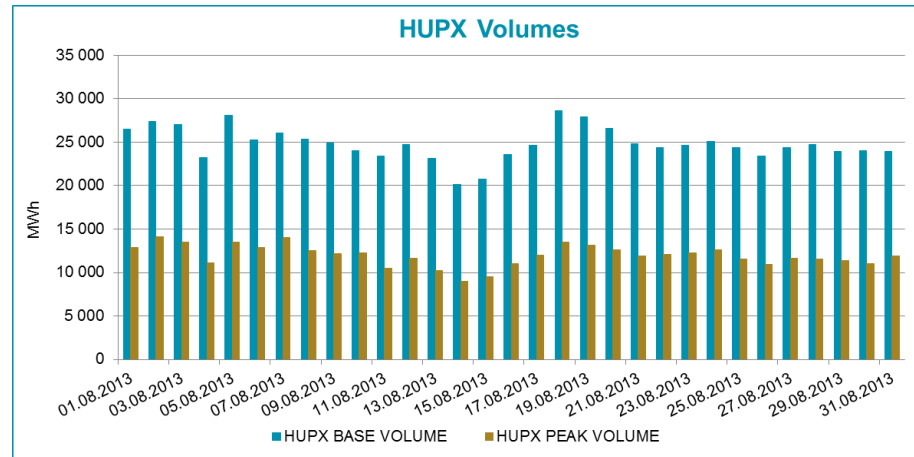
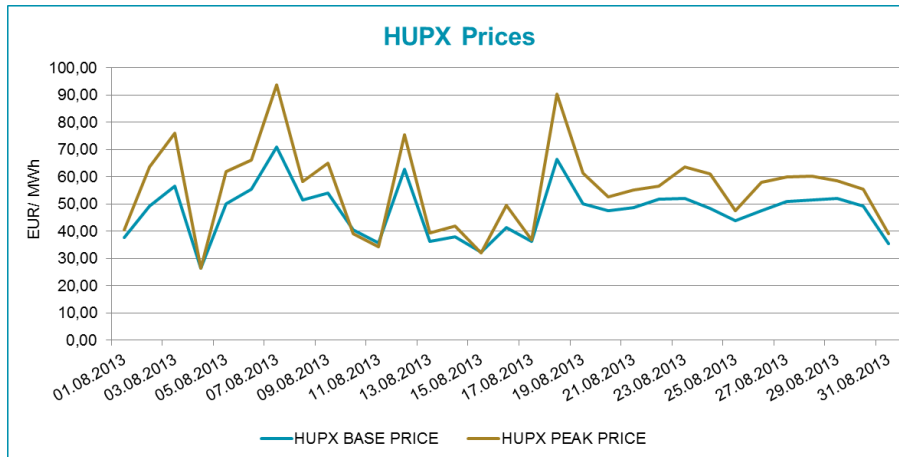
Total Turnover (EUR)	31 832 567	36 873 996	5 041 429	15,84%
Average Daily Turnover (EUR)	1 026 857	1 189 484	162 627	15,84%
Max. Daily Turnover (EUR)	1 991 896	1 930 646	-61 250	-3,07%
Min. Daily Turnover (EUR)	441 413	608 732	167 318	37,91%

Description	07/2013	08/2013	Change	
Total Volume (MWh)	701 879,6	768 885,9	67 006,3	9,55%
Average Daily Traded Volume (MWh)	22 641,3	24 802,8	2 161,5	9,55%
Highest Daily Traded Volume (MWh)	30 065,0	28 632,6	-1 432,4	-4,76%
Lowest Daily Traded Volume(MWh)	18 942,9	20 139,1	1 196,2	6,31%
Highest Hourly Traded Volume (MWh)	1 460,8	1 541,2	80,4	5,50%
Lowest Hourly Traded Volume(MWh)	588,0	666,0	78,0	13,27%
Average Hourly Traded Volume (MWh)	943,4	1 033,4	90,1	9,55%

DAM - Weekdays	01-24 (Baseload)	01-24 (Baseload)		
Average Daily Traded Volume (MWh)	22 559,6	24 753,2	2 193,6	9,72%
DAM - Weekend	01-24 (Baseload)	01-24 (Baseload)		
Average Daily Traded Volume (MWh)	22 876,2	24 923,9	2 047,7	8,95%

DAM - Weekdays	09-20 (Peakload)	09-20 (Peakload)		
Average Daily Traded Volume (MWh)	11 082,4	11 903,3	821,0	7,41%
DAM - Weekend	09-20 (Peakload)	09-20 (Peakload)		
Average Daily Traded Volume (MWh)	11 393,4	12 123,4	730,0	6,41%

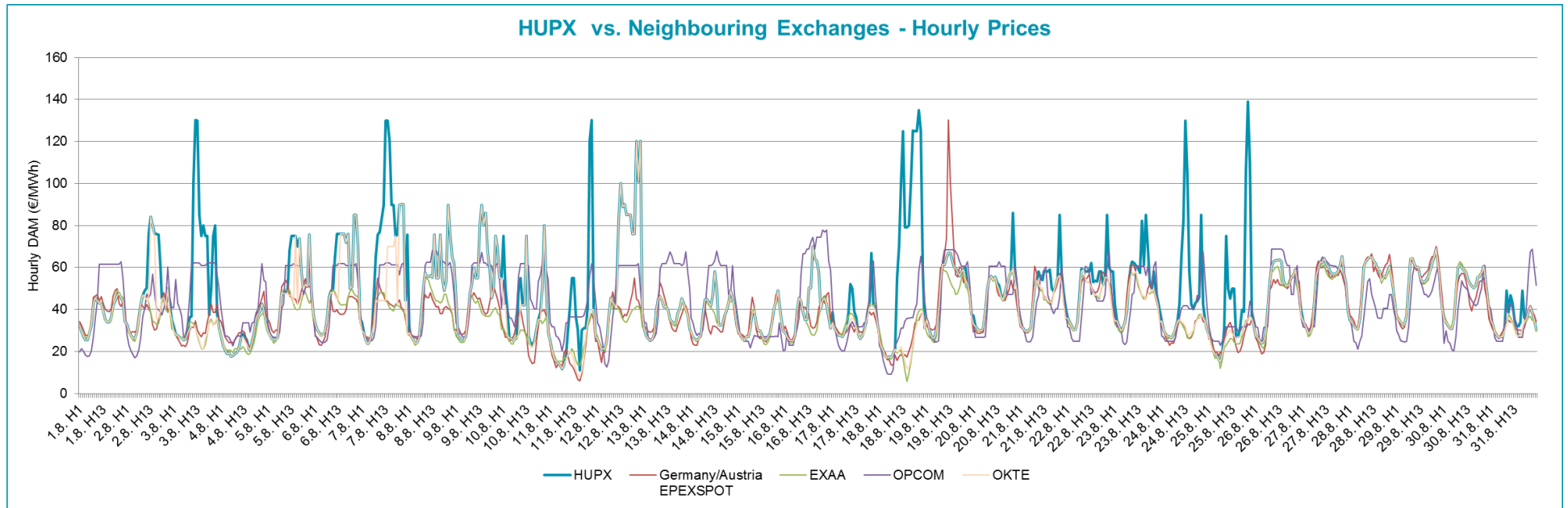
HUPX Prices and volumes



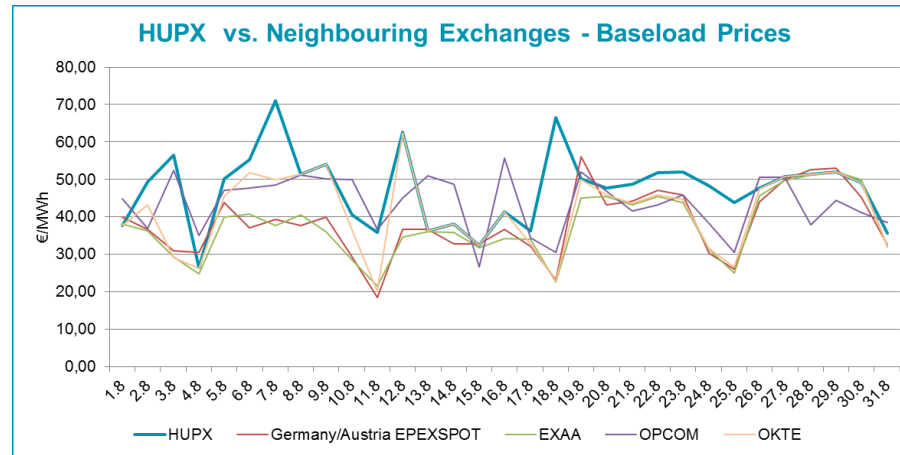
Note:

The bar chart shows the traded volumes in single hours in the examined period (01/08/2013-31/08/2013). We categorized the results according to the traded volume of each hour. Compared to the previous month, the distribution of executed volumes shows changes in the traded volumes: the ratio of the range 0 - 900 MWh, 900 – 1 000 MWh decreased, while the ratio increased regarding the 1 000 – 1 100 MWh, 1 100 – 1 200 MWh, 1 200 – 1 300 MWh and 1 300+ MWh.

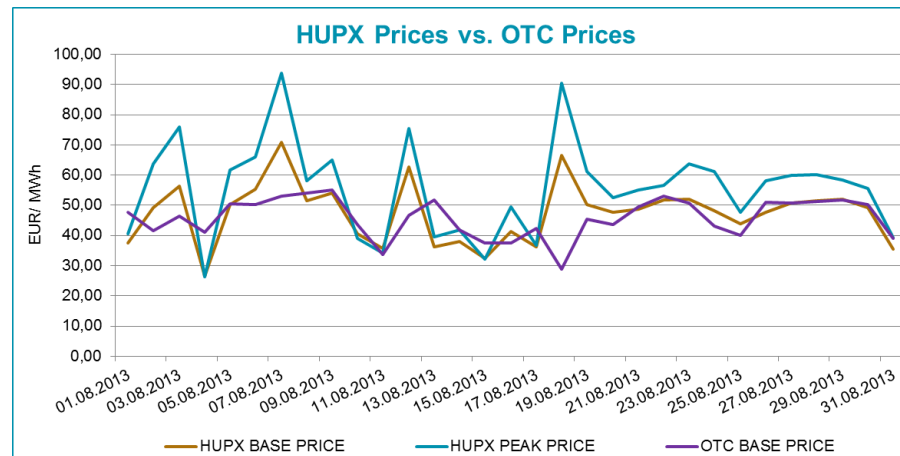
HUPX prices vs. Neighbouring Exchanges – Hourly Prices



HUPX prices vs. Neighbouring Exchanges – Base Prices



HUPX vs. OTC



Diff. BL.	HUPX \leftrightarrow OTC	1,53
Diff. PL.	HUPX \leftrightarrow OTC	-0,49

Average of aggregated OFFERS/BIDS 01/08/2013-31/08/2013

Data shown in the table reflects the average hourly aggregated maximum sell and buy volumes, not considering price steps.

Hour	Offers	Bids	Index volumes
H1	1 263,4	1 659,0	1 076,9
H2	1 432,8	1 631,8	1 128,3
H3	1 558,9	1 535,7	1 139,3
H4	1 553,2	1 492,5	1 138,4
H5	1 495,2	1 470,8	1 077,4
H6	1 436,0	1 449,8	1 008,8
H7	1 397,8	1 501,0	1 013,2
H8	1 294,3	1 594,4	985,6
H9	1 131,4	1 609,1	930,7
H10	1 087,2	1 700,9	965,6
H11	1 076,3	1 802,5	1 003,6
H12	1 091,9	1 877,8	1 043,5
H13	1 084,1	1 950,0	1 081,9
H14	1 082,6	1 905,7	1 062,0
H15	1 077,2	1 844,8	1 023,9
H16	1 062,6	1 815,1	1 000,3
H17	1 062,6	1 787,2	984,1
H18	1 101,1	1 749,5	967,3
H19	1 146,1	1 675,7	943,2
H20	1 140,3	1 716,3	960,9
H21	1 145,2	1 928,9	1 150,0
H22	1 200,0	1 882,0	1 102,8
H23	1 194,1	1 743,5	1 009,3
H24	1 493,8	1 791,4	1 005,4
Σ	29 608,1	41 115,3	24 802,8

Base	
MIN (offer)	1 062,6
MAX (offer)	1 558,9
MIN (bid)	1 449,8
MAX (bid)	1 950,0
Average (offer)	1 233,7
Average (bid)	1 713,1

Peak	
MIN (offer)	1 062,6
MAX (offer)	1 146,1
MIN (bid)	1 609,1
MAX (bid)	1 950,0
Average (offer)	1 095,3
Average (bid)	1 786,2

Aggregated OFFERS/BIDS 01/08/2013-31/08/2013

Data shown in the table reflects hourly aggregated maximum sell and buy volumes, not considering price steps.

Hour	Offers	Bids	Index volumes
H1	39 166,2	51 427,6	33 385,3
H2	44 415,9	50 587,1	34 977,0
H3	48 324,8	47 606,0	35 319,8
H4	48 148,5	46 268,8	35 289,7
H5	46 352,0	45 595,1	33 398,4
H6	44 515,6	44 942,6	31 273,7
H7	43 331,3	46 530,1	31 410,7
H8	40 123,6	49 426,0	30 553,0
H9	35 074,8	49 882,5	28 852,8
H10	33 703,0	52 729,2	29 934,8
H11	33 365,8	55 877,9	31 112,4
H12	33 847,5	58 210,8	32 349,3
H13	33 606,3	60 451,3	33 538,4
H14	33 559,7	59 077,5	32 922,6
H15	33 392,9	57 188,2	31 741,7
H16	32 940,6	56 267,0	31 007,9
H17	32 942,0	55 403,6	30 506,2
H18	34 135,0	54 235,1	29 987,6
H19	35 529,4	51 946,4	29 240,4
H20	35 348,3	53 206,1	29 789,4
H21	35 502,0	59 794,7	35 650,9
H22	37 198,6	58 341,1	34 187,4
H23	37 017,0	54 047,2	31 288,0
H24	46 308,9	55 532,2	31 168,5
Σ	917 849,7	1 274 574,1	768 885,9

Base	
MIN (offer)	32 940,6
MAX (offer)	48 324,8
MIN (bid)	44 942,6
MAX (bid)	60 451,3
Average (offer)	38 243,7
Average (bid)	53 107,3

Peak	
MIN (offer)	32 940,6
MAX (offer)	35 529,4
MIN (bid)	49 882,5
MAX (bid)	60 451,3
Average (offer)	33 953,8
Average (bid)	55 373,0