

Monthly Report September 2013

HUPX DAM reached 732 412,9 MWh in September. In the examined month the total traded volume decreased by 4,74% compared to the 768 885,9 MWh achieved in August. The average daily traded volume was 24 413,8 MWh. The highest daily traded volume was 34 162,5 MWh on the delivery day of 26th September. The number of admitted members was 52 in the examined month.

List of the Members



- Alpiq Energy SE
- CEZ, a.s.
- Danske Commodities A/S
- E.ON Global Commodities SE
- Energy Financing Team (Switzerland) AG
- GDF SUEZ Energia Magyarország Zrt.
- GEN-I d.o.o.
- Holding Slovenske Elektrarne d.o.o.
- JAS Budapest Zrt.
- Magyar Áramszolgáltató Kft.
- Mátrai Erőmű Zrt.
- MVM Partner Zrt.
- Statkraft Markets GmbH
- BC-Energiakereskedő Kft.
- Budapesti Erőmű Zrt.
- Citigroup Global Markets Limited
- Compagnie Nationale du Rhone
- DB Energy Commodities Ltd.
- Dunafin Kft.
- EDF Trading Limited
- Edison Trading S.p.A. Magyarországi Fióktelepe
- EGL AG
- Enel Trade S.p.A.
- Ezpada s.r.o.
- Freepoint Commodities Europe LLP
- Gazprom Marketing & Trading Ltd
- GDF Suez Trading SAS
- Greenenergy-Trade Kft.
- Gunvor International B.V.
- HAMBURGER Hungaria Kft.
- HEP Magyarország Energia Kft
- Interenergo d.o.o.
- ISD Power Kft.
- MAVIR Zrt.
- Mercuria Eneyg Trading S.A
- Monsson Energy Trading S.R.L.
- Morgan Stanley Capital Croup Energy Europe Limited
- Motim Zrt.
- ÓAM Ózdi Acélművek Kft.
- OMV Trading GmbH
- OPTENERGY Kft.
- PETROL d.d. Ljubljana
- RD CZ ENERGY s.r.o.
- Repower Trading Ceska republika s.r.o
- RWE Supply &Trading GmbH
- TEI-ENERGY S.p.A
- TINMAR-IND S.A.
- TRANSENERGO COM S.A.
- Vattenfall EnergyTrading GmbH
- VERBUND AG
- Vitol Gas & Power B.V.
- VPP Erőmű Üzemeltető és Kereskedelmi Zrt.

HUPX Day-Ahead Market

Description	08/2013	09/2013	Change	
HUPX Base Average Price (EUR/MWh)	47,42	46,56	-0,86	-1,81%
HUPX Peak Average Price (EUR/MWh)	55,44	54,46	-0,98	-1,77%
Diff. BL. HUPX→OTC	1,53	0,24	-1,29	-84,26%
Diff. PL. HUPX→OTC	-0,49	-0,75	-0,27	-54,31%

Highest Traded Price (EUR/MWh)	138,95	130,08	-8,87	-6,38%
Lowest Traded Price (EUR/MWh)	11,09	10,18	-0,91	-8,21%

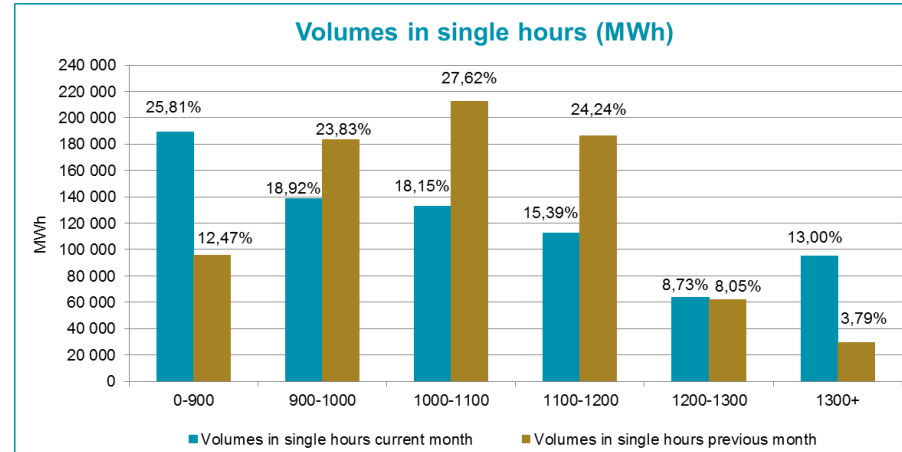
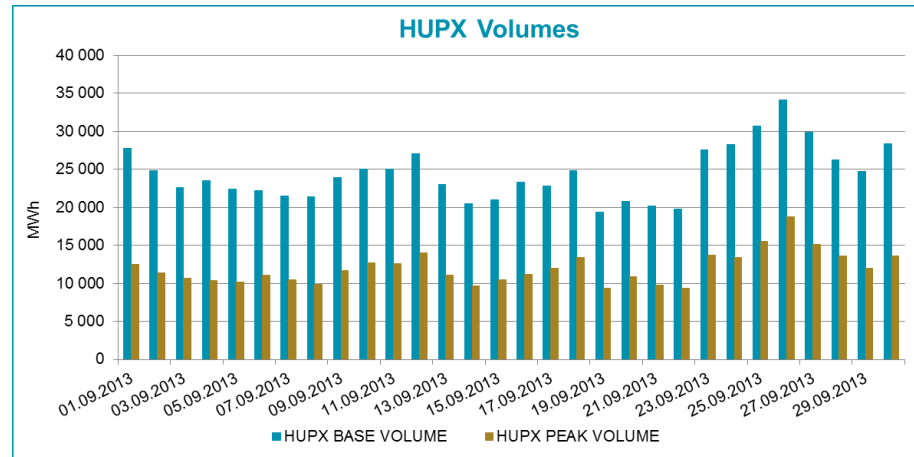
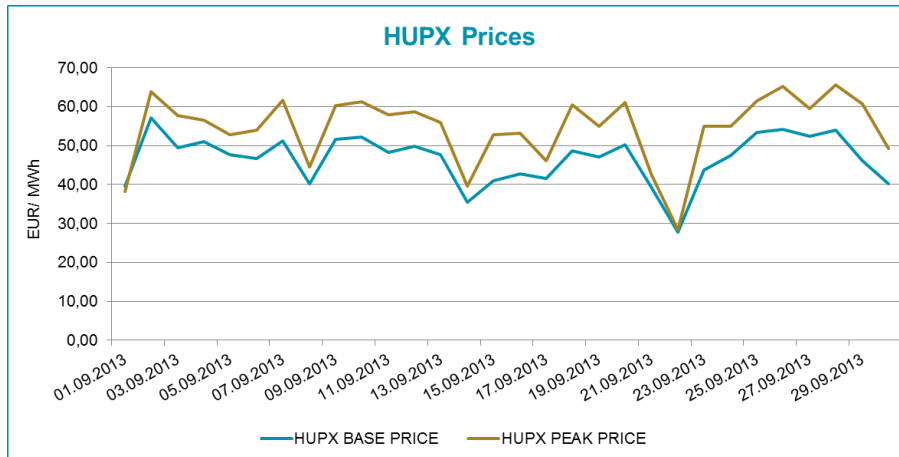
Total Turnover (EUR)	36 873 996	34 486 507	-2 387 489	-6,47%
Average Daily Turnover (EUR)	1 189 484	1 149 550	-39 934	-3,36%
Max. Daily Turnover (EUR)	1 930 646	1 876 192	-54 454	-2,82%
Min. Daily Turnover (EUR)	608 732	549 438	-59 294	-9,74%

Description	08/2013	09/2013	Change	
Total Volume (MWh)	768 885,9	732 412,9	-36 473,0	-4,74%
Average Daily Traded Volume (MWh)	24 802,8	24 413,8	-389,0	-1,57%
Highest Daily Traded Volume (MWh)	28 632,6	34 162,5	5 529,9	19,31%
Lowest Daily Traded Volume(MWh)	20 139,1	19 341,7	-797,4	-3,96%
Highest Hourly Traded Volume (MWh)	1 541,2	1 703,5	162,3	10,53%
Lowest Hourly Traded Volume(MWh)	666,0	574,1	-91,9	-13,80%
Average Hourly Traded Volume (MWh)	1 033,4	1 017,2	-16,2	-1,57%

DAM - Weekdays	01-24 (Baseload)	01-24 (Baseload)		
Average Daily Traded Volume (MWh)	24 753,2	25 216,3	463,1	1,87%
DAM - Weekend	01-24 (Baseload)	01-24 (Baseload)		
Average Daily Traded Volume (MWh)	24 923,9	22 541,3	-2 382,7	-9,56%

DAM - Weekdays	09-20 (Peakload)	09-20 (Peakload)		
Average Daily Traded Volume (MWh)	11 903,3	12 495,8	592,5	4,98%
DAM - Weekend	09-20 (Peakload)	09-20 (Peakload)		
Average Daily Traded Volume (MWh)	12 123,4	10 862,6	-1 260,8	-10,40%

HUPX Prices and volumes



Note:

The bar chart shows the traded volumes in single hours in the examined period (01/09/2013-30/09/2013). We categorized the results according to the traded volume of each hour. Compared to the previous month, the distribution of executed volumes shows changes in the traded volumes: the ratio of the range 0 - 900 MWh, 1 200 – 1 300 MWh and 1 300+ MWh increased, while the ratio decreased regarding the 900 – 1 000 MWh, 1 000 – 1 100 MWh, 1 100 – 1 200 MWh.

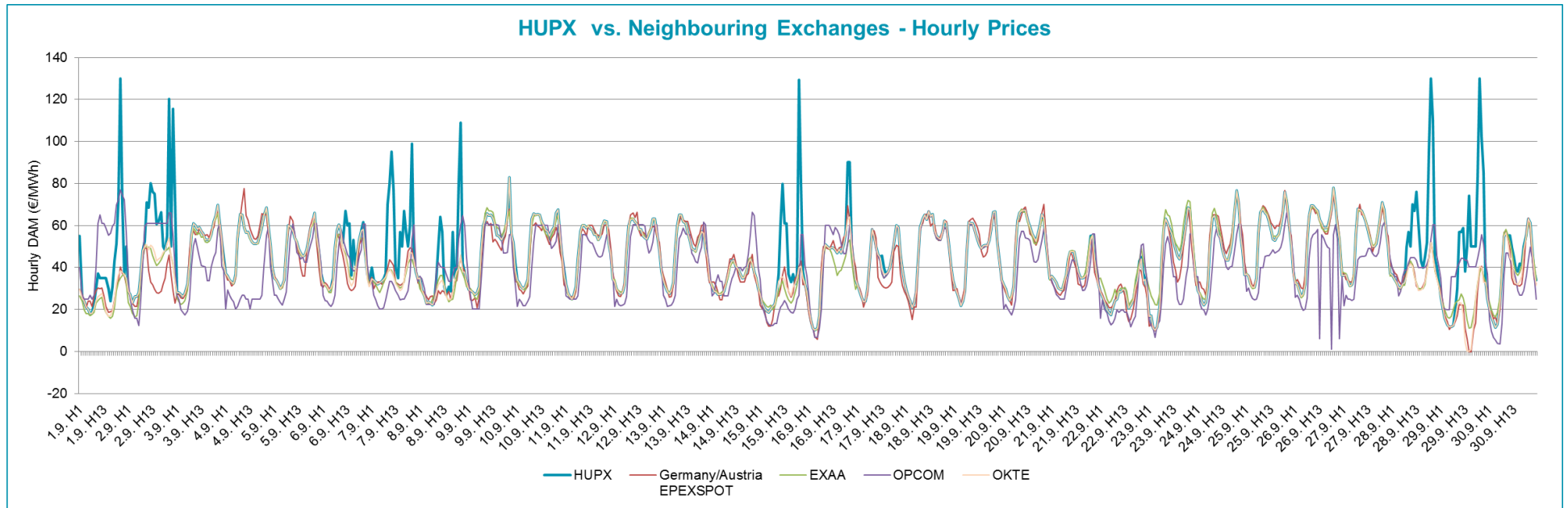
HUPX Day-Ahead Market Traded Volumes
MWh / Delivery day / hour

Delivery hour	09/01	09/02	09/03	09/04	09/05	09/06	09/07	09/08	09/09	09/10	09/11	09/12	09/13	09/14	09/15	09/16	09/17	09/18	09/19	09/20	09/21	09/22	09/23	09/24	09/25	09/26	09/27	09/28	09/29	09/30	TOTAL
00-01	1361.8	1177.9	807.3	847.4	991.5	939.4	952.0	1078.8	978.0	957.5	909.3	1050.5	954.4	821.1	812.2	1013.9	739.1	854.6	630.7	785.7	714.4	762.3	1167.8	1069.8	1107.4	1234.7	1138.0	1122.9	1245.0	1300.4	29 525.8
01-02	1421.7	1263.6	1002.1	1176.4	1129.4	819.1	933.1	1032.1	1111.8	993.2	1002.0	1129.2	1130.6	902.9	881.4	1092.5	839.2	871.1	764.1	833.9	778.6	897.0	1265.2	1316.0	1302.1	1535.7	1318.2	950.6	1153.9	1339.4	32 186.1
02-03	1393.3	1282.2	1057.3	1447.9	1192.7	1005.4	917.3	1100.9	1253.8	1186.7	1053.8	1105.7	1174.9	1181.7	970.4	1168.2	908.7	995.2	836.5	976.6	1002.4	931.6	1290.1	1460.4	1323.7	1523.4	1327.6	1021.7	1050.9	1284.7	34 624.7
03-04	1381.1	1287.1	1096.9	1385.5	1278.2	905.4	897.6	1083.3	1356.8	1185.8	1147.2	1242.0	1146.3	1185.6	890.9	1122.8	929.4	996.7	895.7	1048.2	1024.5	944.1	1247.0	1457.8	1349.8	1456.4	1527.6	1074.8	997.3	1229.9	34 771.7
04-05	1341	1152.6	1017.5	1443.1	1208.2	876.9	889.4	1049.3	1250.1	1140.4	1098.5	1034.5	1038.4	1147.9	876.2	1053.9	789.5	871.0	781.0	950.3	1021.7	1017.6	1146.9	1388.0	1262.3	1397.1	1345.3	969.8	1029.7	1089.2	32 677.3
05-06	1288.3	1015.6	883.7	929.2	1053.9	968.3	1006.5	1014.8	824.2	928.3	875.8	890.3	901.6	994.6	878.7	774.8	649.1	747.3	700.4	767.4	905.0	857.9	1001.9	1133.1	1165.1	1094.0	1198.5	846.6	1068.4	1101.8	28 465.2
06-07	1252.5	1041.6	1181.4	941.2	870.8	837.5	1074.4	985.8	985.9	1083.0	937.1	1094.9	923.0	742.4	913.2	861.9	1036.4	1002.9	747.6	759.3	735.0	873.4	930.8	1276.1	1402.0	1199.0	1198.9	1026.2	1081.1	1162.3	30 094.0
07-08	1153.5	903.3	1045.4	1053.7	960.8	1045.6	918.0	873.0	897.8	865.4	1091.0	1245.9	1131.9	716.7	832.2	976.1	1160.2	1180.4	1007.2	890.9	769.3	699.5	1164.8	1299.3	1413.3	1269.0	1398.3	1268.8	931.1	1256.6	31 519.0
08-09	1063.9	1000.0	943.1	904.7	829.2	1013.5	912.6	993.2	1022.8	1173.5	1157.9	1164.7	989.9	688.0	795.5	772.5	1000.6	1040.9	888.8	994.2	792.6	725.2	1456.5	1231.7	1511.3	1703.5	1462.2	1151.3	933.2	1054.6	31 324.4
09-10	1030.3	888.1	843.5	848.9	766	944.2	856.2	782.5	908.3	899.8	1145.5	1126.4	1027.1	782.8	811.3	866	1058.3	1135.9	896.2	881.5	758.8	757.5	1293.6	1211.1	1496.8	1551.7	1450.0	1155.1	891.5	1168.8	30 231.7
10-11	985.6	894.8	924.3	741.5	821.4	823.2	899.3	763.9	915.7	891.2	1047.7	1073.5	928.3	794.6	842.2	898.7	1105.5	1097.5	823.6	849.1	752.2	732.3	1135.7	1080.1	1289.9	1375.6	1307.5	1150.8	940.2	1189.6	29 175.5
11-12	1005.1	960.9	906.3	888.8	883.6	962.2	892.0	840.3	946.1	910.0	1059.0	1049.7	973.9	828.2	881.5	1008.7	1141.4	1114.7	748.6	903.0	756.3	804.7	1058.6	1130.4	1270.9	1403.2	1260.0	1097.0	992.6	1119.2	29 796.9
12-13	1009.1	1053.5	909.6	891.7	935.7	934.6	899.2	791.4	933.0	947.2	944.1	1158.5	884.4	829.6	830.2	940.8	1126.3	1084.3	708.8	854.3	759.6	761.7	1018.5	1039.6	1324.4	1519.1	1208.8	1051.8	973.3	1186.4	29 519.5
13-14	1029.9	969.0	825.7	905.5	907.7	867.8	895.5	762.3	979.2	954.7	978.5	1171.5	803.2	875.5	840.2	897.1	1057.1	1091.7	709.4	954.0	728.0	746.0	963.7	1032.8	1192.1	1509.2	1158.7	1078.2	948.7	1189.5	29 022.0
14-15	1051.6	942.5	819.5	783.2	846.3	918.5	855.2	784.8	877.1	1046.0	972.8	1069.3	796.0	851.4	825	935.3	987.2	1148.4	645.9	940.3	804.2	776.4	957.9	1020.7	1186.6	1502.7	1138.8	1075.7	923.3	1171.7	28 754.3
15-16	1015.7	959.2	868.7	771.3	866.7	965.6	893.6	853.1	959.7	1025.3	953.5	989.2	842.5	796.1	884.8	927.1	949.9	1182.7	818.2	942.0	797.3	713.6	948.3	1012.4	1104.5	1620.0	1116.2	1115.7	947.1	1152.2	28 982.2
16-17	1121.8	912.4	830.1	957.6	872.1	990.4	874.7	846.3	1001.7	998.0	1028.9	1251.4	917.3	854.7	938	928.6	886.2	1114.7	652.0	832.7	819.6	794.7	1058.7	1024.3	1159.0	1626.1	1220.4	1108.1	946.7	1076.3	29 643.5
17-18	1089.8	931.2	885.9	867.9	796.3	876.6	833.1	815.3	1001.7	1211.1	975.7	1251.6	966.0	756.7	850.2	976.6	863.5	1087.3	700.5	815.5	957.3	735.4	1088.5	1059.7	1266.1	1692.1	1215.0	1168.0	983.9	1177.4	29 892.9
18-19	1084.2	902.3	923.4	873.9	893.1	804.3	834.9	882.7	974.1	1270.7	1140.2	1363.9	946.6	803.0	892.3	886.2	782.7	1113.7	837.2	945.4	893.2	803.0	1308.2	1229.6	1283.0	1531.8	1306.3	1162.5	1118.0	1014.9	30 704.7
19-20	1045.2	1029.7	997.2	967.8	767	849.9	844.3	888.8	1053.0	1344.0	1163.3	1367.1	991.9	837.3	1067.7	1122.2	993.1	1151.4	887.6	952.2	957.4	1028.9	1371.3	1312.2	1462.2	1262.0	1251.4	1359.6	1108.9	33 128.5	
20-21	1166.7	1169.7	1050.7	1266.9	1094.2	1131.9	931.4	934.3	849.7	1206.3	1369.0	1453.2	1091.2	900.7	1018.5	1239.5	1147.9	1343.3	1127.2	786.4	789.6	962.0	1517.8	1337.5	1241.1	1368.8	1333.5	1248.4	1287.2	1302.3	34 666.9
21-22	1192	1082.1	921.5	905.6	876.1	826.7	760.3	767.2	791.5	848.2	1061.9	1179.7	928.7	696.0	839.6	1073.9	944.3	895.7	873.8	574.1	814.7	889.5	1171.5	1084.6	1017.4	1237.0	1015.1	1082.2	1028.4	1334.5	28 711.8
22-23	1043.8	974.2	840.0	870.2	735.2	836.4	821.7	746.0	955.6	860.2	951.5	734.6	677.9	703.1	808.1	857.8	849.8	841.3	848.2	784.4	839.6	658.2	986.9	941.0	1222.8	1046.6	896.7	1021.9	912.1	1157.8	26 423.6
23-24	1252.6	1017.2	1063.8	830.7	830.9	983.4	858.7	828.3	985.7	1050.1	945.0	804.7	798.5	768.3	775.5	917.5	899.8	831.5	818.2	756.1	1018.3	865.5	1045.0	1134.8	1331.9	1065.9	979.0	1017.3	942.9	1149.3	28 570.7
TOTAL	27 780.5	24 859.8	22 634.9	23 500.6	22 407.0	22 226.8	21 451.0	21 397.8	23 923.3	24 976.6	25 009.2	27 002.0	22 962.5	20 458.5	20 955.8	23 312.6	22 843.2	24 804.2	19 341.7	20 777.5	20 189.6	19 738.0	27 595.2	28 283.0	30 685.7	34 162.5	29 915.6	26 214.0	24 686.1	28 317.7	732 412.9

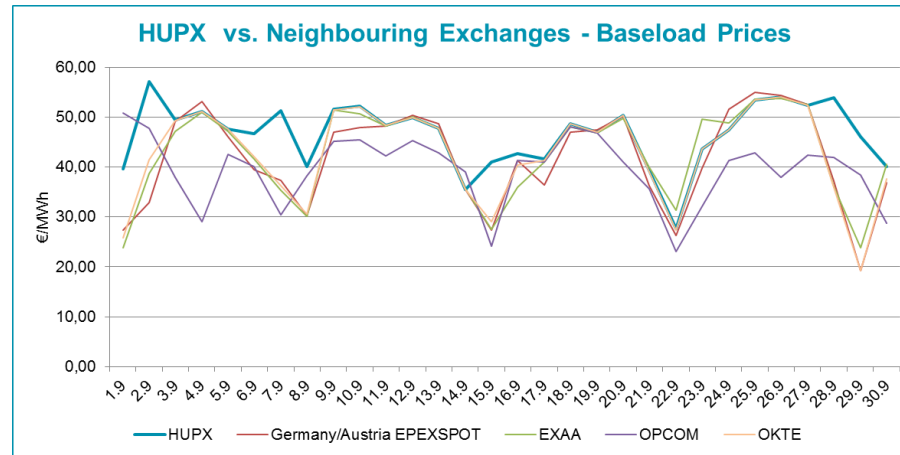
HUPX Day-Ahead Market Prices
€/MWh / Delivery day / hour

Delivery hour	09/01	09/02	09/03	09/04	09/05	09/06	09/07	09/08	09/09	09/10	09/11	09/12	09/13	09/14	09/15	09/16	09/17	09/18	09/19	09/20	09/21	09/22	09/23	09/24	09/25	09/26	09/27	09/28	09/29	09/30	AVG
00-01	55.01	28.60	28.05	37.00	35.03	33.17	39.99	34.80	29.46	34.00	32.00	33.21	33.99	31.00	27.10	20.24	31.74	29.29	30.64	31.91	35.81	28.50	16.70	29.00	36.95	32.43	36.12	36.49	26.24	20.05	31.82
01-02	25.15	27.22	27.90	35.80	34.00	32.00	33.87	29.20	28.93	32.89	28.00	29.70	30.88	28.56	23.17	15.00	28.80	26.21	27.93	29.95	34.32	26.00	17.01	27.06	35.99	32.05	36.54	34.29	20.73	16.79	28.53
02-03	23.84	23.00	27.05	34.00	32.17	30.81	33.00	26.40	28.32	30.98	26.20	28.47	28.67	28.35	20.60	11.15	25.89	23.92	25.23	26.00	32.64	24.07	11.00	24.05	32.26	29.05	33.80	32.70	15.82	13.93	26.11
03-04	21.00	26.00	26.00	33.09	30.05	29.02	32.00	23.02	27.04	30.00	25.00	27.26	27.40	27.25	19.38	10.18	23.51	20.93	21.70	24.20	30.08	20.00	10.30	21.95	30.43	26.00	31.07	30.54	12.66	11.50	24.29
04-05	20.15	26.23	27.61	32.50	31.42	30.09	32.70	23.50	27.90	30.86	27.00	28.12	28.95	27.06	18.30	11.02	24.05	23.31	23.90	26.00	29.62	18.78	11.59	23.35	30.40	27.30	31.85	30.25	11.61	13.00	24.96
05-06	18.07	27.90	32.00	36.60	34.14	35.06	33.39	23.08	31.00	34.45	31.00	31.66	32.67	27.30	20.08	17.00	29.97	28.40	29.00	30.94	29.40	17.00	21.60	31.00	35.00	32.00	35.67	32.00	11.76	23.30	28.43
06-07	18.39	37.49	42.14	53.80	48.37	49.30	34.76	22.00	47.27	51.30	44.09	47.87	49.00	28.69	21.42	36.00	45.39	44.00	48.00	48.90	32.96	21.00	43.90	49.75	56.69	51.95	55.85	32.61	12.50	37.00	40.41
07-08	23.02	48.14	55.29	65.40	60.02	57.40	37.03	24.23	59.80	63.08	57.07	59.83	59.80	32.50	22.46	47.55	58.30	59.20	61.65	62.26	36.35	24.28	58.00	63.49	66.30	64.30	68.00	49.71	19.84	54.85	50.64
08-09	30.05	52.49	61.09	64.96</																											

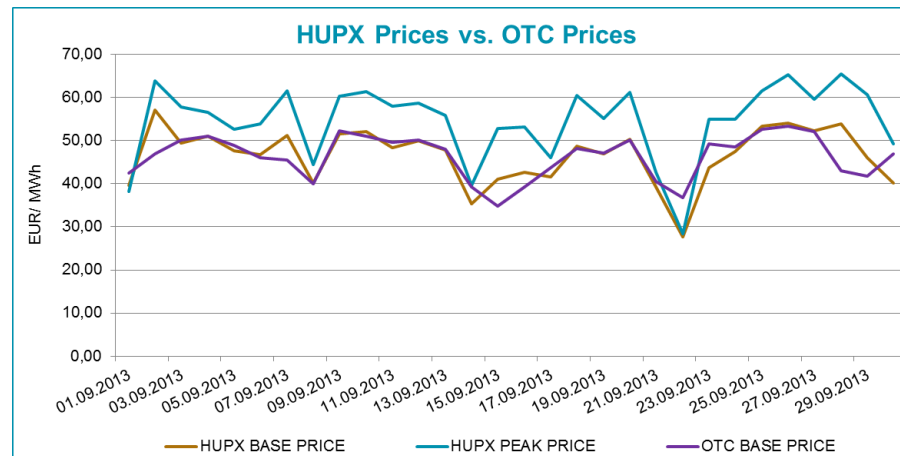
HUPX prices vs. Neighbouring Exchanges – Hourly Prices



HUPX prices vs. Neighbouring Exchanges – Base Prices



HUPX vs. OTC



Diff. BL.	HUPX↔OTC	0,24
Diff. PL.	HUPX↔OTC	-0,75

Average of aggregated OFFERS/BIDS 01/09/2013-30/09/2013

Data shown in the table reflects the average hourly aggregated maximum sell and buy volumes, not considering price steps.

Hour	Offers	Bids	Index volumes
H1	1 417,1	1 341,1	984,2
H2	1 555,2	1 309,4	1 072,9
H3	1 726,8	1 212,3	1 154,2
H4	1 722,7	1 208,4	1 159,1
H5	1 612,3	1 208,6	1 089,2
H6	1 422,3	1 257,6	948,8
H7	1 354,7	1 403,8	1 003,1
H8	1 466,4	1 505,4	1 050,6
H9	1 376,9	1 373,9	1 044,1
H10	1 346,6	1 431,1	1 007,7
H11	1 310,4	1 485,7	972,5
H12	1 315,3	1 514,5	993,2
H13	1 295,0	1 510,6	984,0
H14	1 282,2	1 476,8	967,4
H15	1 308,3	1 443,1	958,5
H16	1 358,2	1 433,9	966,1
H17	1 338,9	1 434,7	988,1
H18	1 359,0	1 383,0	996,4
H19	1 388,8	1 386,9	1 023,5
H20	1 312,2	1 586,7	1 104,3
H21	1 395,3	1 775,7	1 155,6
H22	1 340,9	1 512,8	957,1
H23	1 302,0	1 360,7	880,8
H24	1 419,3	1 694,7	952,4
Σ	33 727,0	34 251,5	24 413,8

Base	
MIN (offer)	1 282,2
MAX (offer)	1 726,8
MIN (bid)	1 208,4
MAX (bid)	1 775,7
Average (offer)	1 405,3
Average (bid)	1 427,1

Peak	
MIN (offer)	1 282,2
MAX (offer)	1 388,8
MIN (bid)	1 373,9
MAX (bid)	1 586,7
Average (offer)	1 332,6
Average (bid)	1 455,1

Aggregated OFFERS/BIDS 01/09/2013-30/09/2013

Data shown in the table reflects hourly aggregated maximum sell and buy volumes, not considering price steps.

Hour	Offers	Bids	Index volumes
H1	42 513,2	40 232,3	29 525,8
H2	46 657,1	39 281,6	32 186,1
H3	51 805,0	36 369,3	34 624,7
H4	51 681,7	36 251,5	34 771,7
H5	48 369,5	36 256,6	32 677,3
H6	42 669,9	37 728,0	28 465,2
H7	40 640,6	42 115,3	30 094,0
H8	43 992,2	45 163,2	31 519,0
H9	41 305,6	41 218,3	31 324,4
H10	40 399,3	42 934,3	30 231,7
H11	39 312,2	44 571,9	29 175,5
H12	39 457,9	45 434,6	29 796,9
H13	38 850,4	45 317,4	29 519,5
H14	38 465,5	44 302,7	29 022,0
H15	39 247,8	43 294,3	28 754,3
H16	40 744,9	43 017,3	28 982,2
H17	40 167,6	43 041,2	29 643,5
H18	40 771,2	41 489,6	29 892,9
H19	41 664,0	41 607,7	30 704,7
H20	39 367,1	47 602,3	33 128,5
H21	41 859,2	53 270,0	34 666,9
H22	40 227,1	45 383,8	28 711,8
H23	39 061,3	40 819,6	26 423,6
H24	42 579,6	50 842,0	28 570,7
Σ	1 011 809,9	1 027 544,8	732 412,9

Base	
MIN (offer)	38 465,5
MAX (offer)	51 805,0
MIN (bid)	36 251,5
MAX (bid)	53 270,0
Average (offer)	42 158,7
Average (bid)	42 814,4

Peak	
MIN (offer)	38 465,5
MAX (offer)	41 664,0
MIN (bid)	41 218,3
MAX (bid)	47 602,3
Average (offer)	39 979,5
Average (bid)	43 652,6