

Monthly Report February 2013

HUPX DAM reached 581 282,8 MWh in February. In the examined month the total traded volume decreased by 17,62% compared to the 705 571,6 MWh achieved in January. The average daily traded volume was 20 760,1 MWh. The highest daily traded volume was 24 766,6 MWh on the delivery day of 15th February. The number of admitted members was 48 in the examined month.

List of the Members



Members

- | | | |
|--|--|--|
| → Alpiq Energy SE | → BC-Energiakereskedő Kft. | → Interenergo d.o.o. |
| → CEZ, a.s. | → Budapesti Erőmű Zrt. | → ISD Power Kft. |
| → Danske Commodities A/S | → Citigroup Global Markets Limited | → MAVIR Zrt. |
| → E.ON Energy Trading SE | → Compagnie Nationale du Rhone | → Mercuria Energy Trading S.A |
| → EDF DÉMÁSZ Zrt. | → DB Energy Commodities Ltd. | → Monsson Energy Trading S.R.L. |
| → Energy Financing Team (Switzerland) AG | → Dunafin Kft. | → Morgan Stanley Capital Group Energy Europe Limited |
| → GDF SUEZ Energia Magyarország Zrt. | → EDF Trading Limited | → ÓAM Ózdi Acélművek Kft. |
| → GEN-I d.o.o. | → Edison Trading S.p.A. Magyarországi Fióktelepe | → OMV Trading GmbH |
| → Holding Slovenske Elektrarne d.o.o. | → EGL AG | → PETROL d.d. Ljubljana |
| → JAS Budapest Zrt. | → Enel Trade S.p.A. | → Repower Trading Ceska republika s.r.o |
| → Magyar Áramszolgáltató Kft. | → Ezpada s.r.o. | → Rudnap Energy Limited |
| → Mátrai Erőmű Zrt. | → Freepoint Commodities Europe LLP | → RWE Supply & Trading GmbH |
| → MVM Partner Zrt. | → Gazprom Marketing & Trading Ltd | → S.C. Tinmar S.A |
| → Statkraft Markets GmbH | → GDF Suez Trading SAS | → TRANSENERGO COM S.A. |
| | → Greenergy-Trade Kft. | → Vattenfall Energy Trading GmbH |
| | → HAMBURGER Hungaria Kft. | → VERBUND AG |
| | → HEP Magyarország Energia Kft | → VPP Erőmű Üzemeltető és Kereskedelmi Zrt. |

HUPX Day-Ahead Market

Description	01/2013	02/2013	Change	
HUPX Base Average Price (EUR/MWh)	44,39	44,77	0,38	0,86%
HUPX Peak Average Price (EUR/MWh)	54,34	52,41	-1,93	-3,55%
Diff. BL. HUPX→OTC	1,02	-0,24	-1,26	-123,47%
Diff. PL. HUPX→OTC	2,00	1,57	-0,43	-21,48%

Highest Traded Price (EUR/MWh)	130,02	150,04	20,02	15,40%
Lowest Traded Price (EUR/MWh)	-30,09	9,00	39,09	129,91%

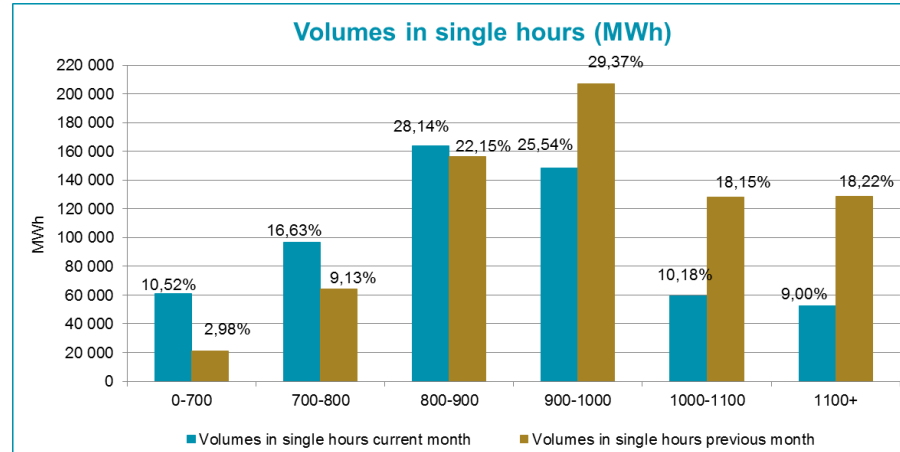
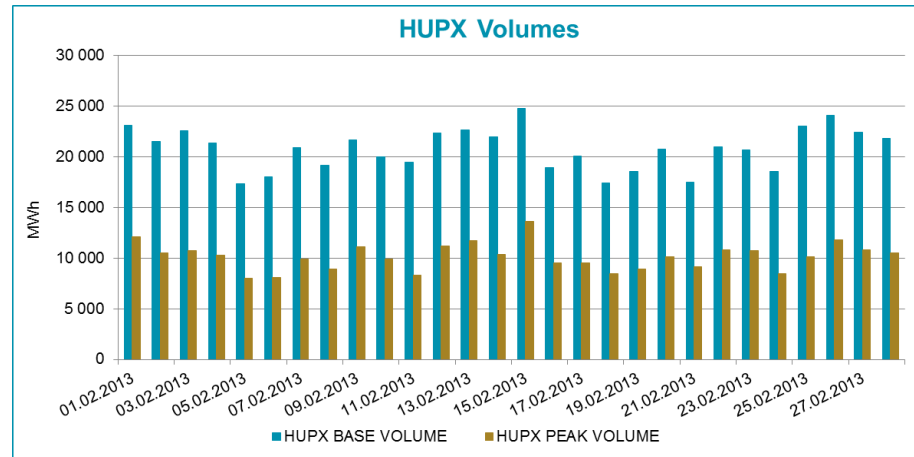
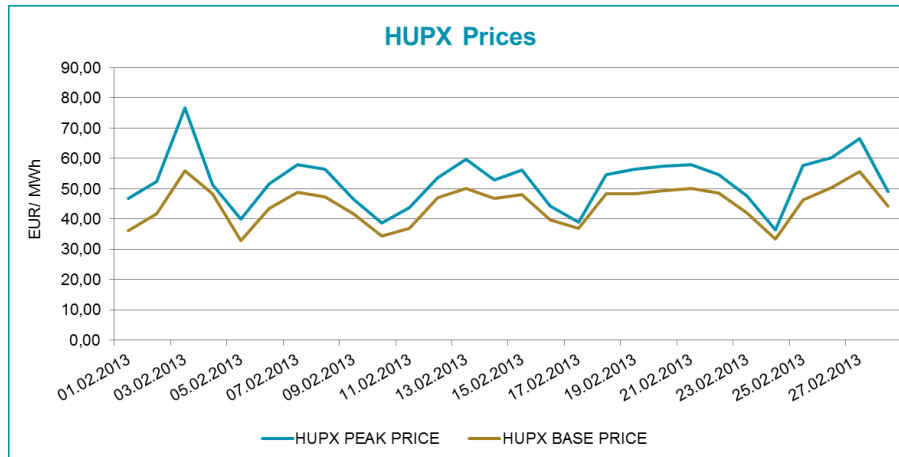
Total Turnover (EUR)	31 451 961	26 034 169	-5 417 792	-17,23%
Average Daily Turnover (EUR)	1 014 579	929 792	-84 788	-8,36%
Max. Daily Turnover (EUR)	1 869 286	1 238 113	-631 172	-33,77%
Min. Daily Turnover (EUR)	196 951	576 182	379 231	192,55%

Description	01/2013	02/2013	Change	
Total Volume (MWh)	705 571,6	581 282,8	-124 288,8	-17,62%
Average Daily Traded Volume (MWh)	22 760,4	20 760,1	-2 000,3	-8,79%
Highest Daily Traded Volume (MWh)	31 009,2	24 766,6	-6 242,6	-20,13%
Lowest Daily Traded Volume(MWh)	19 060,2	17 341,1	-1 719,1	-9,02%
Highest Hourly Traded Volume (MWh)	1 627,3	1 412,0	-215,3	-13,23%
Lowest Hourly Traded Volume(MWh)	556,1	490,7	-65,4	-11,76%
Average Hourly Traded Volume (MWh)	948,3	865,0	-83,3	-8,79%

DAM - Weekdays	01-24 (Baseload)	01-24 (Baseload)		
Average Daily Traded Volume (MWh)	23 070,9	20 875,4	-2 195,5	-9,52%
DAM - Weekend	01-24 (Baseload)	01-24 (Baseload)		
Average Daily Traded Volume (MWh)	21 867,6	20 471,9	-1 395,8	-6,38%

DAM - Weekdays	09-20 (Peakload)	09-20 (Peakload)		
Average Daily Traded Volume (MWh)	11 054,5	10 154,9	-899,7	-8,14%
DAM - Weekend	09-20 (Peakload)	09-20 (Peakload)		
Average Daily Traded Volume (MWh)	11 023,8	10 058,0	-965,8	-8,76%

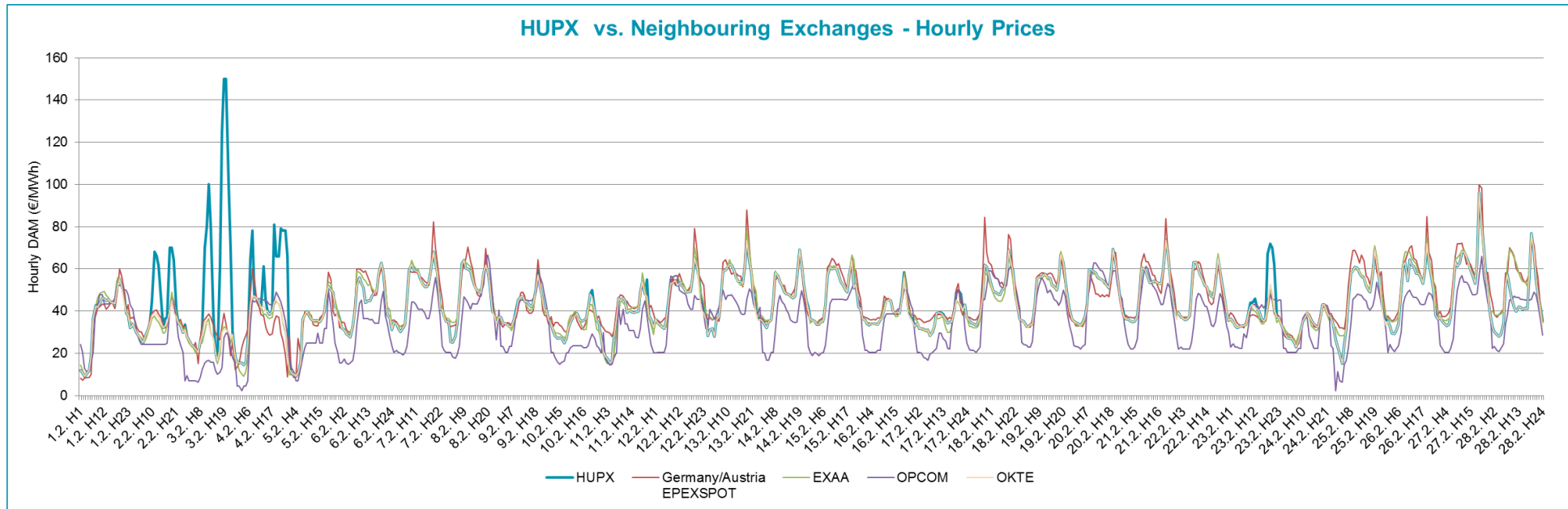
HUPX Prices and volumes



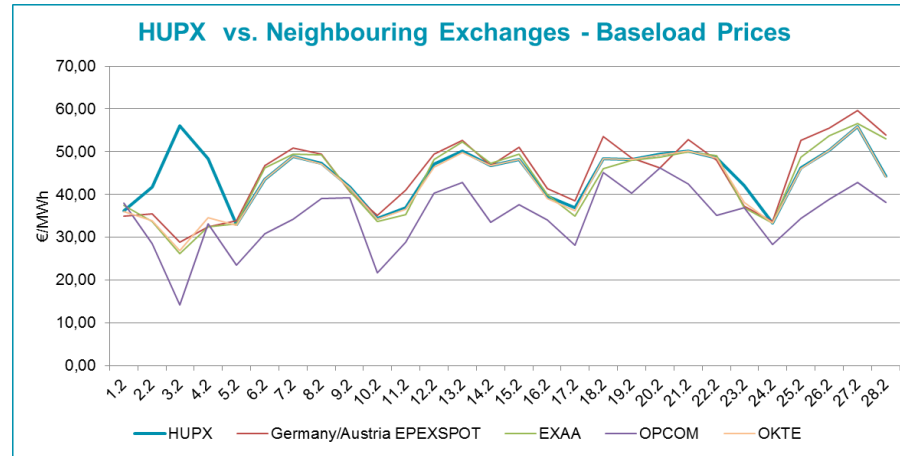
Note:

The bar chart shows the traded volumes in single hours in the examined period (01/02/2013-28/02/2013). We categorized the results according to the traded volume of each hour. Compared to the previous month, the distribution of executed volumes shows changes in the traded volumes: the ratio of the range 0 - 700 MWh, 700 – 800 MWh and 800 - 900 MWh increased, while the ratio decreased regarding the 900 - 1 000 MWh, 1 000 – 1 100 MWh and 1 100+ MWh.

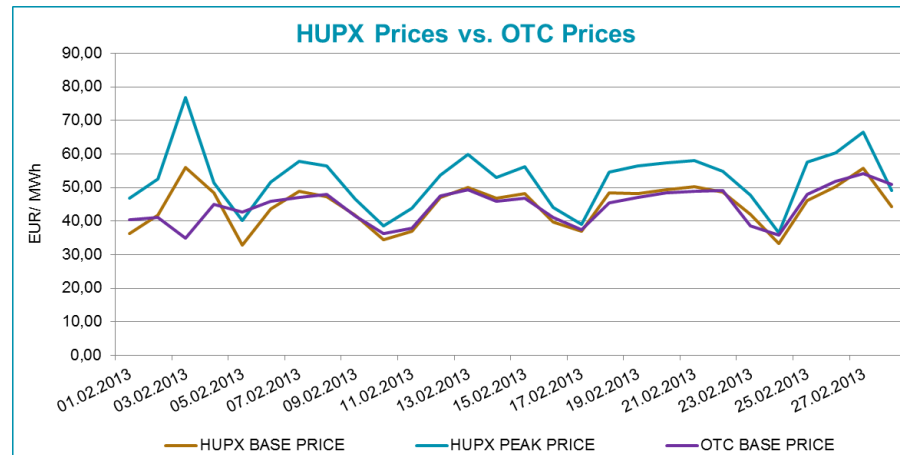
HUPX prices vs. Neighbouring Exchanges – Hourly Prices



HUPX prices vs. Neighbouring Exchanges – Base Prices



HUPX vs. OTC



Diff. BL.	HUPX↔OTC	-0,24
Diff. PL.	HUPX↔OTC	1,57

Average of aggregated OFFERS/BIDS 01/02/2013-28/02/2013

Data shown in the table reflects the average hourly aggregated maximum sell and buy volumes, not considering price steps.

Hour	Offers	Bids	Index volumes
H1	1 341,3	1 084,7	821,4
H2	1 579,7	1 049,5	929,3
H3	1 685,6	915,6	953,6
H4	1 778,0	894,7	968,8
H5	1 677,5	890,5	911,7
H6	1 398,8	978,9	782,7
H7	1 266,5	1 173,6	764,5
H8	1 188,4	1 276,0	870,4
H9	1 275,0	1 154,6	850,4
H10	1 259,5	1 188,4	869,5
H11	1 252,8	1 225,9	882,9
H12	1 244,7	1 240,7	875,5
H13	1 228,5	1 179,6	836,7
H14	1 242,4	1 145,3	833,9
H15	1 287,4	1 125,2	820,5
H16	1 295,4	1 121,7	812,9
H17	1 221,8	1 140,0	789,7
H18	1 144,6	1 255,4	837,6
H19	1 143,3	1 292,6	867,0
H20	1 174,8	1 264,7	850,6
H21	1 111,9	1 348,5	877,3
H22	1 180,5	1 240,0	917,8
H23	1 271,0	1 189,0	932,9
H24	1 352,8	1 437,3	902,5
Σ	31 602,3	27 812,3	20 760,1

Base	
MIN (offer)	1 111,9
MAX (offer)	1 778,0
MIN (bid)	890,5
MAX (bid)	1 437,3
Average (offer)	1 316,8
Average (bid)	1 158,8

Peak	
MIN (offer)	1 143,3
MAX (offer)	1 295,4
MIN (bid)	1 121,7
MAX (bid)	1 292,6
Average (offer)	1 230,8
Average (bid)	1 194,5

Aggregated OFFERS/BIDS 01/02/2013-28/02/2013

Data shown in the table reflects hourly aggregated maximum sell and buy volumes, not considering price steps.

Hour	Offers	Bids	Index volumes
H1	37 557,2	30 371,1	22 998,1
H2	44 231,5	29 386,1	26 019,7
H3	47 198,1	25 637,6	26 701,0
H4	49 784,5	25 052,2	27 126,4
H5	46 969,0	24 933,5	25 528,5
H6	39 167,2	27 410,4	21 916,3
H7	35 462,3	32 860,1	21 406,9
H8	33 276,1	35 726,7	24 372,1
H9	35 700,3	32 328,9	23 810,5
H10	35 265,5	33 274,6	24 344,6
H11	35 079,7	34 325,9	24 722,4
H12	34 851,9	34 739,7	24 514,7
H13	34 398,2	33 029,9	23 426,7
H14	34 788,3	32 067,0	23 349,7
H15	36 045,8	31 505,4	22 974,6
H16	36 271,7	31 407,6	22 760,9
H17	34 210,1	31 920,6	22 111,4
H18	32 049,2	35 152,0	23 453,4
H19	32 011,7	36 193,0	24 274,8
H20	32 893,1	35 411,5	23 817,4
H21	31 132,6	37 757,0	24 564,1
H22	33 054,4	34 718,9	25 697,1
H23	35 588,0	33 292,2	26 121,9
H24	37 878,9	40 243,3	25 269,6
Σ	884 865,3	778 745,2	581 282,8

Base	
MIN (offer)	31 132,6
MAX (offer)	49 784,5
MIN (bid)	24 933,5
MAX (bid)	40 243,3
Average (offer)	36 869,4
Average (bid)	32 447,7

Peak	
MIN (offer)	32 011,7
MAX (offer)	36 271,7
MIN (bid)	31 407,6
MAX (bid)	36 193,0
Average (offer)	34 463,8
Average (bid)	33 446,3