

Monthly Report January 2013

HUPX DAM reached 705 571,6 MWh in January. In the examined month the total traded volume decreased by 7,34% compared to the 761 424,7 MWh achieved in December. The average daily traded volume was 22 760,4 MWh. The highest daily traded volume was 31 009,2 MWh on the delivery day of 24th January. The number of admitted members reached 48.

List of the Members



Members

- | | | |
|--|--|--|
| → Alpiq Energy SE | → BC-Energiakereskedő Kft. | → Interenergo d.o.o. |
| → CEZ, a.s. | → Budapesti Erőmű Zrt. | → ISD Power Kft. |
| → Danske Commodities A/S | → Citigroup Global Markets Limited | → MAVIR Zrt. |
| → E.ON Energy Trading SE | → Compagnie Nationale du Rhone | → Mercuria Energy Trading S.A |
| → EDF DÉMÁSZ Zrt. | → DB Energy Commodities Ltd. | → Monsson Energy Trading S.R.L. |
| → Energy Financing Team (Switzerland) AG | → Dunafin Kft. | → Morgan Stanley Capital Group Energy Europe Limited |
| → GDF SUEZ Energia Magyarország Zrt. | → EDF Trading Limited | → ÓAM Ózdi Acélművek Kft. |
| → GEN-I d.o.o. | → Edison Trading S.p.A. Magyarországi Fióktelepe | → OMV Trading GmbH |
| → Holding Slovenske Elektrarne d.o.o. | → EGL AG | → PETROL d.d. Ljubljana |
| → JAS Budapest Zrt. | → Enel Trade S.p.A. | → Repower Trading Ceska republika s.r.o |
| → Magyar Áramszolgáltató Kft. | → Ezpada s.r.o. | → Rudnap Energy Limited |
| → Mátrai Erőmű Zrt. | → Freepoint Commodities Europe LLP | → RWE Supply & Trading GmbH |
| → MVM Partner Zrt. | → Gazprom Marketing & Trading Ltd | → S.C. Tinmar S.A |
| → Statkraft Markets GmbH | → GDF Suez Trading SAS | → TRANSENERGO COM S.A. |
| | → Greenergy-Trade Kft. | → Vattenfall Energy Trading GmbH |
| | → HAMBURGER Hungaria Kft. | → VERBUND AG |
| | → HEP Magyarország Energia Kft | → VPP Erőmű Üzemeltető és Kereskedelmi Zrt. |

HUPX Day-Ahead Market

Description	12/2012	01/2013	Change	
HUPX Base Average Price (EUR/MWh)	42,44	44,39	1,95	4,59%
HUPX Peak Average Price (EUR/MWh)	56,12	54,34	-1,78	-3,17%
Diff. BL HUPX→OTC	-0,19	1,02	1,21	626,38%
Diff. PL HUPX→OTC	1,95	2,00	0,05	2,45%

Highest Traded Price (EUR/MWh)	170,01	130,02	-39,99	-23,52%
Lowest Traded Price (EUR/MWh)	-113,67	-30,09	83,58	73,53%

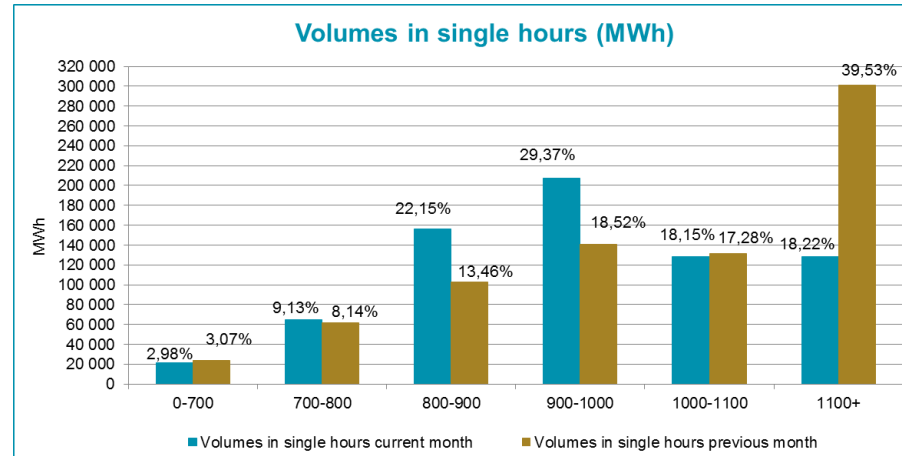
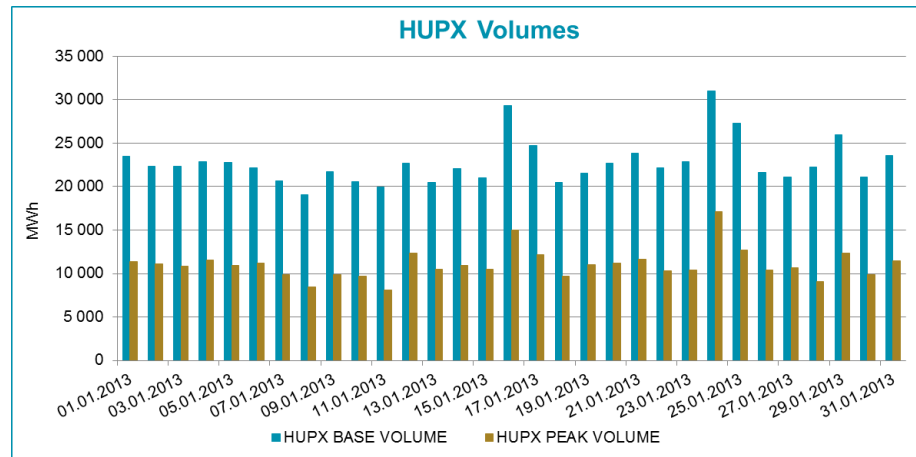
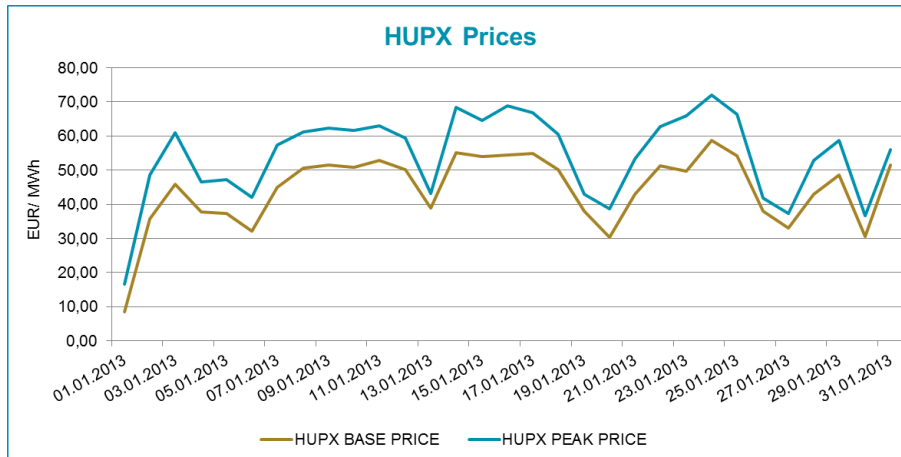
Total Turnover (EUR)	34 364 474	31 451 961	-2 912 513	-8,48%
Average Daily Turnover (EUR)	1 108 531	1 014 579	-93 952	-8,48%
Max. Daily Turnover (EUR)	2 469 867	1 869 286	-600 581	-24,32%
Min. Daily Turnover (EUR)	-74 265	196 951	271 216	365,20%

Description	12/2012	01/2013	Change	
Total Volume (MWh)	761 424,7	705 571,6	-55 853,1	-7,34%
Average Daily Traded Volume (MWh)	24 562,1	22 760,4	-1 801,7	-7,34%
Highest Daily Traded Volume (MWh)	34 461,9	31 009,2	-3 452,7	-10,02%
Lowest Daily Traded Volume(MWh)	17 636,5	19 060,2	1 423,7	8,07%
Highest Hourly Traded Volume (MWh)	1 796,6	1 627,3	-169,3	-9,42%
Lowest Hourly Traded Volume(MWh)	547,2	556,1	8,9	1,63%
Average Hourly Traded Volume (MWh)	1 023,4	948,3	-75,1	-7,34%

DAM - Weekdays	01-24 (Baseload)	01-24 (Baseload)		
Average Daily Traded Volume (MWh)	25 649,5	23 070,9	-2 578,6	-10,05%
DAM - Weekend	01-24 (Baseload)	01-24 (Baseload)		
Average Daily Traded Volume (MWh)	22 840,3	21 867,6	-972,7	-4,26%

DAM - Weekdays	09-20 (Peakload)	09-20 (Peakload)		
Average Daily Traded Volume (MWh)	13 682,3	11 054,5	-2 627,8	-19,21%
DAM - Weekend	09-20 (Peakload)	09-20 (Peakload)		
Average Daily Traded Volume (MWh)	11 248,4	11 023,8	-224,7	-2,00%

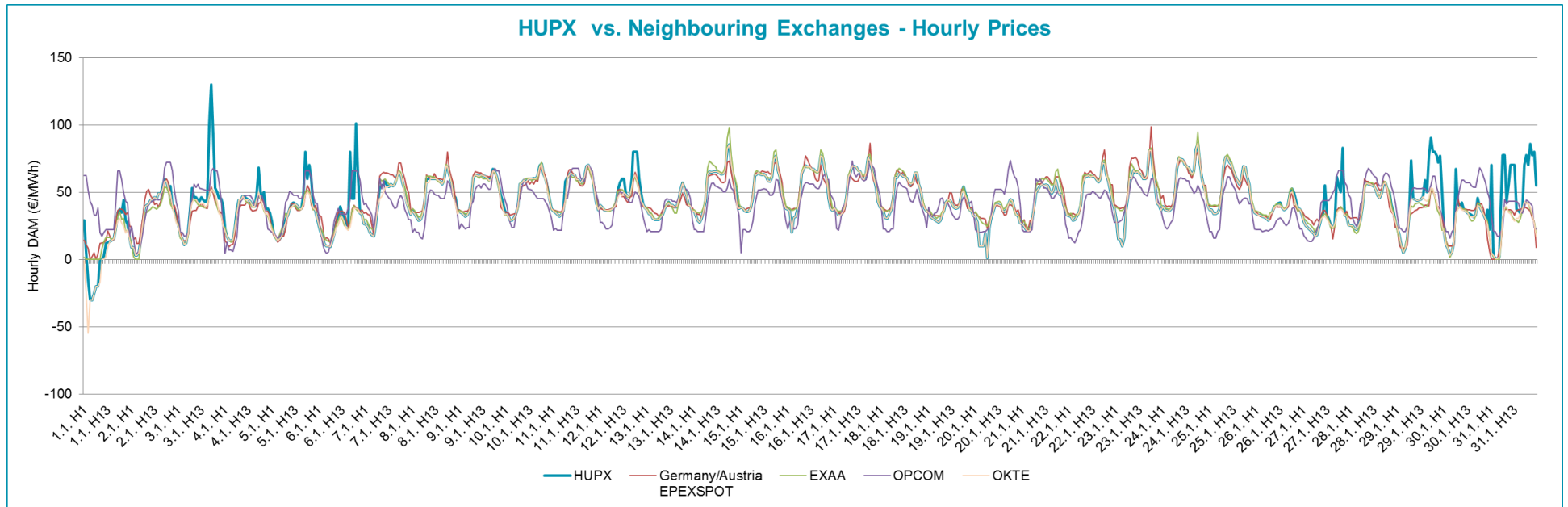
HUPX Prices and volumes



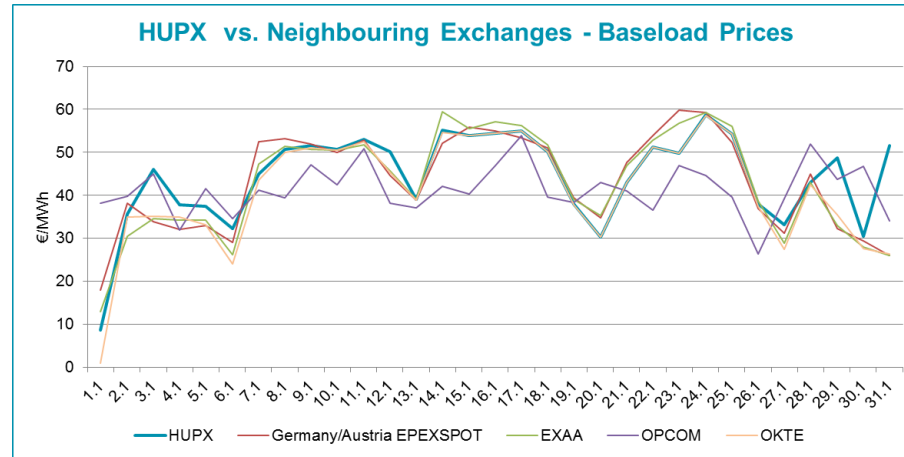
Note:

The bar chart shows the traded volumes in single hours in the examined period (01/01/2013-31/01/2013). We categorized the results according to the traded volume of each hour. Compared to the previous month, the distribution of executed volumes shows changes in the traded volumes: the ratio of the range 0-700 MWh, 1 000 – 1 100 MWh and 1 100+ MWh decreased, while the ratio increased regarding the 700 - 800 MWh, 800 - 900 MWh and 900 – 1 000 MWh.

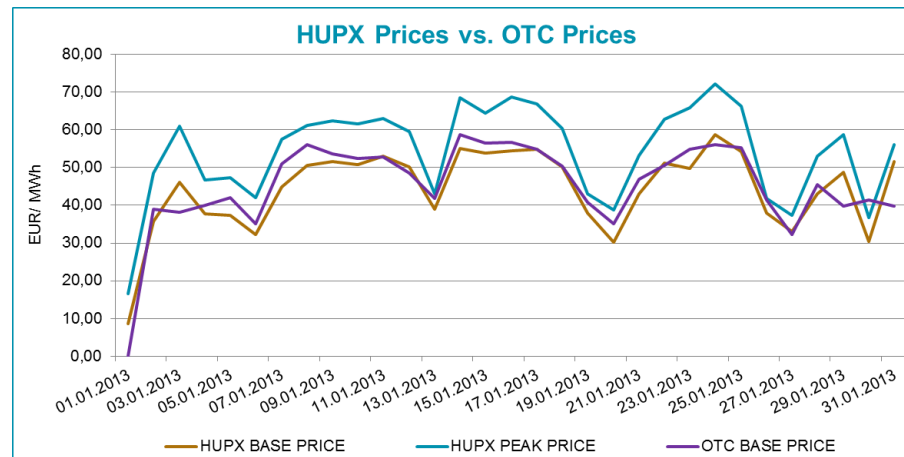
HUPX prices vs. Neighbouring Exchanges – Hourly Prices



HUPX prices vs. Neighbouring Exchanges – Base Prices



HUPX vs. OTC



Diff. BL.	HUPX↔OTC	1,02
Diff. PL.	HUPX↔OTC	2,00

Average of aggregated OFFERS/BIDS 01/01/2013-31/01/2013

Data shown in the table reflects the average hourly aggregated maximum sell and buy volumes, not considering price steps.

Hour	Offers	Bids	Index volumes
H1	1 316,0	1 254,8	983,0
H2	1 511,6	1 172,3	1 001,3
H3	1 622,6	1 042,3	1 027,0
H4	1 727,7	991,2	1 056,0
H5	1 626,9	995,7	993,9
H6	1 421,9	1 112,2	943,6
H7	1 273,5	1 324,6	870,0
H8	1 310,3	1 387,8	959,9
H9	1 319,8	1 345,9	910,0
H10	1 232,1	1 429,4	925,6
H11	1 207,4	1 462,2	931,3
H12	1 205,6	1 476,4	928,1
H13	1 189,8	1 452,1	926,0
H14	1 203,3	1 406,1	899,9
H15	1 262,4	1 396,5	899,9
H16	1 232,2	1 420,0	897,4
H17	1 135,5	1 501,9	910,0
H18	1 087,8	1 613,7	953,3
H19	1 106,5	1 544,6	940,5
H20	1 133,6	1 500,5	924,7
H21	1 079,7	1 601,6	994,8
H22	1 151,2	1 479,2	974,4
H23	1 226,8	1 411,1	961,4
H24	1 271,5	1 542,2	948,3
Σ	30 855,6	32 864,3	22 760,4

Base	
MIN (offer)	1 079,7
MAX (offer)	1 727,7
MIN (bid)	991,2
MAX (bid)	1 613,7
Average (offer)	1 285,6
Average (bid)	1 369,3

Peak	
MIN (offer)	1 087,8
MAX (offer)	1 319,8
MIN (bid)	1 345,9
MAX (bid)	1 613,7
Average (offer)	1 193,0
Average (bid)	1 462,4

Aggregated OFFERS/BIDS 01/01/2013-31/01/2013

Data shown in the table reflects hourly aggregated maximum sell and buy volumes, not considering price steps.

Hour	Offers	Bids	Index volumes
H1	40 795,4	38 897,4	30 472,7
H2	46 858,6	36 342,4	31 040,5
H3	50 302,1	32 309,9	31 838,4
H4	53 558,3	30 726,2	32 735,9
H5	50 432,9	30 866,7	30 812,2
H6	44 077,5	34 478,5	29 252,6
H7	39 478,7	41 062,9	26 971,5
H8	40 620,5	43 020,7	29 756,3
H9	40 913,8	41 724,4	28 209,3
H10	38 194,1	44 311,9	28 692,7
H11	37 429,1	45 329,6	28 871,1
H12	37 373,8	45 767,8	28 771,3
H13	36 882,4	45 014,6	28 706,3
H14	37 302,3	43 587,7	27 896,5
H15	39 134,2	43 290,1	27 896,9
H16	38 198,7	44 020,7	27 817,9
H17	35 201,3	46 559,6	28 209,2
H18	33 721,6	50 024,1	29 552,1
H19	34 301,2	47 883,7	29 154,8
H20	35 142,8	46 515,8	28 666,2
H21	33 471,4	49 650,9	30 838,9
H22	35 687,4	45 854,8	30 204,9
H23	38 029,6	43 744,3	29 804,7
H24	39 415,8	47 809,2	29 398,7
Σ	956 523,5	1 018 793,9	705 571,6

Base	
MIN (offer)	33 471,4
MAX (offer)	53 558,3
MIN (bid)	30 726,2
MAX (bid)	50 024,1
Average (offer)	39 855,1
Average (bid)	42 449,7

Peak	
MIN (offer)	33 721,6
MAX (offer)	40 913,8
MIN (bid)	41 724,4
MAX (bid)	50 024,1
Average (offer)	36 982,9
Average (bid)	45 335,8